

Annual Production Sale
MARCH 1, 2024

1:00 PM, Big West Management Feeding Facility, Dillon, Montana



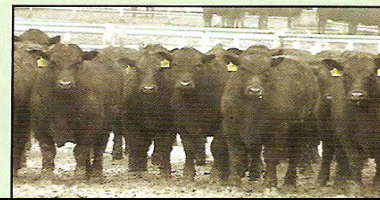
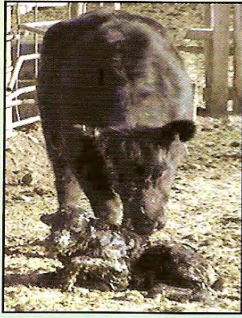
RM Scottsman 9625
"A True American Outcross"

Calving Ease

Fertility

Maternal

Feedyard Performance



R

REMINISCE ANGUS RANCH

Bryan and Marcia Mussard

(406) 925-1416* Dillon, MT * bryanmussard406@gmail.com

145 Head 20-MONTH OLD ANGUS BULLS

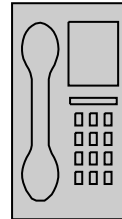
Friday, March 1st, 2024

1:00 PM

Big West Management Cattle Feeding Facility

Dillon, Montana

AUCTIONEER: Roger Jacobs (406) 698-7686



SALE DAY PHONES

(406) 925-1416 Bryan

(406) 925-1417 Marcia

(406) 660-1214 Silas

(406) 925-0526 Talitha

(406) 490-3263 Jill

(406) 683-6363 Office

RINGMEN:

Jeff Thomas, Prairie Star (406) 581-8859

Kurt Kangus, American Angus Assoc. (406) 366-4190

DELIVERY - FREE delivery In-State or up to 500 miles. We will be happy to assist you in making delivery arrangements. Delivery Discount - Haul your own, \$100 per bull within three days of the sale date, to be deducted at the time of purchase. Please make all qualifying FREE delivery arrangements at time of purchase.

BOARD - No charge until March 31st, 2024. Effective April 1st, 2024, all feed charges will become the responsibility of the purchaser, a current cost of \$100 per month will be added to the purchase price. Please make arrangements for Board at time of purchase.

DISCOUNTS - Available only on individual lots \$4500 or above

Volume Purchases: 5 to 9 Bulls - 5% Discount on qualifying bulls

10+ Bulls - 10% Discount on qualifying bulls

BIDS/SIGHT UNSEEN GUARANTEE - If you are unable to attend the sale, please call us, and we will assist you with your order - We offer a sight unseen satisfaction guarantee; we enjoy and pride ourselves on providing you with the best possible bull to fit your program needs, however, If you don't like 'Em when you see 'Em, you don't own 'Em.

ANNOUNCEMENTS - A supplemental update sheet will be available on sale day. Announcements from the block take precedent over information contained in this catalog. Reminisce Angus bulls are bred and developed for the commercial cattle industry, as well these bulls sell with registration papers. Reminisce Angus will retain a 1/2 semen revenue sharing interest. Full possession and full salvage value sells with all bulls. Complimentary Pre-sale lunch at noon - CAB New York Strip sandwiches.

TERMS AND CONDITIONS - All bulls sell according to the standard terms and conditions of the American Angus Association. Terms are cash.

CONDITIONING: Reminisce Angus bulls are bred and raised in Beaverhead County. They have been maintained on a complete health program starting at birth, preweaning, weaning and yearling. We have done extensive BVD testing at Reminisce Angus—all tests have been negative for PI's (persistently infected carriers). All bulls have been developed and maintained on a 41 MegaCal/lb gain high roughage ration at the Big West Management cattle feeding facility in Dillon. Fertility testing, breeding soundness exam, and scrotal measurements have been completed. The bulls may be viewed at Big West Management's cattle feeding facility.

WARRANTY—The seller guarantees that all bulls have passed a breeding and soundness exam. Insurance is available, please review the Coverage Summary of Bull Mortality statement. All bulls are guaranteed for the first breeding season (60-day period following the first turnout) due to genetic and/or structural defects. Please feel free to contact us about any and all injuries. We take care of our customers. Seller will provide a suitable replacement if available, or purchaser will receive full credit, minus the salvage value of the original purchase price towards the purchase of a bull in the next Reminisce Angus sale. We would like to encourage all buyers to consider purchasing MORTALITY insurance offered the day of the sale. Please feel free to contact us at any time, prior to September 1st, 2024.



Hello Reminisce friends and customers:

Not since QAS Traveler 23-4 has there been a bloodline so sought after and used. In fact, almost all the angus bloodlines today, trace back to this bull.

This year we continue the introduction of our American outcross genetics, with the 2nd generation of our Reminisce influence, Scotland genetics by three of our most influential herd bull standouts. Nearly half of the bulls in this sale have these American outcross genetics in their pedigree.

Not only are we leading the industry back to the future with our outcross genetics and our extreme middle approach to genetic solutions, which more than any other thing we have done, has retained buyers and kept them from chasing the next extreme fad. This idea is anything but average, it's the base for longevity. It is the catalyst for producing predictable, repeatable cattle AND beef!

For decades now a growing chasm has been filled with wonder and mystery in the beef industry from the producer to the consumer.

The number of ranchers on the landscape has dropped by over 50% and the consumption per capita has dropped by over 40% since the early 70's. These two things led to the drop in small farmer feeders and small local and regional packers and distributors. This isn't a result of packer concentration or collusion. They are just one of the many symptoms of a disappearing landscape. But why or how did this happen? This goes back over 60 years to one fraudulent claim that animal fat is bad for your health. The fraudulent professors that developed this unproven hypothesis went on to work for the USDA. Today, the problem still lies within the USDA, and we will not change the food pyramid, increase meat consumption and improve public health until we change the perception of our product within the USDA.

You might wonder what all this has to do with our bull sale and why discuss it here. Because, I have heard too many industry leaders right now, ready to throw in the towel and start collecting subsidies from the govt.(USDA). The same USDA that has driven the industry to this point of desperation and put so many people on medications through their dietary suggestions of carbs, sugars and insulin.

We want you to know that Reminisce Angus has always and will always go the extra distance to find more revenue for our customers. Through our branded beef, we have learned more about the beef industry, we have risked more than is thought to be reasonable or even sane to bring REAL added value back to you. We are working tirelessly with doctors, nutritionists, legislators and investigative journalists to change the food pyramid and the outlook for beef production in this country. It is going to take a united, complex group of people to see this through, but we have to be part of the conversation. We are putting this group together as I write this letter.

When you invest in a Reminisce bull, not only are you receiving an incredible, sound genetic package for several traits; you are also investing in your own livelihood and the future generations on your place. Please join us for some REAL fun on sale day. If you are traveling far, let us know, we'll get you a room and feed you well the night before.

Reminisce Angus... There is a Measurable Difference!

Sincerely,

*Bryan, Marcia
and the Reminisce Angus Crew*



**Buyer Pre-Sale Luncheon
Friday, March 1st @ 11:30 am
Big West Management Sale Barn**

**Thank you for coming, please stay and
enjoy a Gorgeous toddy,
Reminisce Angus Ranch specialty
meat snacks and a Cattle Baron cigar
with us after the sale.**



The Measurable Difference in Angus Genetics!



**\$500 Stimulus Purchase Credit
Available to :**

- **All new bull buyers
and**
- **Existing Buyers can get the \$500 for bringing a
new bull buyer**

\$1000 Discount for 2025

All 2024 Bull Buyers will be entered into Drawing

Names will be placed in the hat by the office - Winner announced at end of sale

American Angus Association / Breed Average EPD & Values / Spring 2024

	CED	BW	WW	YW	RADG	DMI	HP	Milk	Marb	RE	\$M	\$B	\$C
AAA Non-Parent Bulls	+6	+1.2	+63	+112	+0.26	+1.14	+12.2	+27	+0.69	+0.65	+63	+144	+250
Reminisce Sale Lots Avg	+7	+0.3	+46	+78	+0.18	+0.34	+13.6	+25	+0.61	+0.52	+72	+112	+217



Continuing our objective of “Making them Better, without Making them Bigger”

DNA- We have collected DNA on Reminisce cattle, extensively since 2008. With over 2,400 progeny tested.

Feedlot and Carcass data - We have collected feedlot and carcass data on cattle since 1988.

EPDs are just one tool we use for genetic selection. Cows are never culled based on their EPDs, only on their maternal performance.

BUYERS SPECIAL NOTE

If you are looking at our catalog for the first time, we want to take this opportunity to share our calving season and bull development program. We calve our cows in June and early July. The bulls are weaned in December, then, performance tested on a 41 mega cal. Ration for 140 days. After ultra-sounding at 12 months of age, we ship them back to high mountain (7,000-7,500') dry summer pasture for 4 months. They are put back on a high roughage ration through sale day.

These bulls on average are only about 3 months old before the grass turns yellow and loses much of its nutritional value. They don't have much of an opportunity to graze on good lush green grass. The cows as well have to produce milk on old dry feed with only protein blocks to supplement them.

Without feeding them high levels of grain, the calves do not post weaning and yearling weights of traditional yearling bulls. However, the additional 8 months of age allow us to develop them for longevity, providing a product with more ROI. We continue to performance test all of our cull calves and several groups of customer calves to ensure we are producing top performance-bred genetics.

SIGHT UNSEEN GUARANTEE

We understand not all buyers can make it to our sale. You can feel confident buying bulls sight unseen at Reminisce Angus. We take special interest in delivering prescription orders to our customers unable to attend. Please feel free to give us a call in advance to discuss your needs.

(406) 925-1416 Bryan / (406) 660-1214 Silas / (406) 683-6363 Office



Stockmens Insurance

- All Risk Mortality (ARM)
 - 7% up to \$24,999
- ARM & Accident Only Infertility
 - 11% up to \$10,000
- ARM & Accident, Sickness & Disease Infertility
 - 12.5% up to \$25k
- ARM & Comprehensive Infertility
 - 16% up to \$24,999
 - 17% \$25,000 or more

Rokstone Insurance

- All Risk Mortality (ARM)
 - 7.7% up to \$150,000



Kevin Peterson
406-683-6882
kevin@montanainsurance.net

Mountainview Insurance offers animal mortality insurance designed to protect your investment in the event of death or loss of use of your animal.

Contact us today to discuss your options.

(406) 683-6881

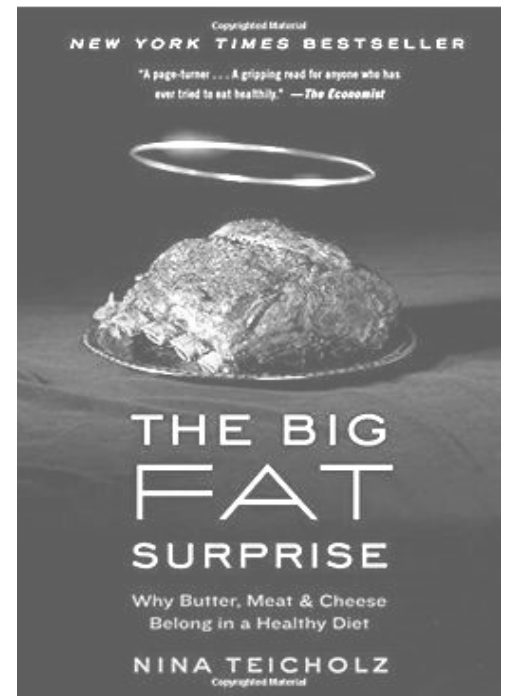


TOM PEILA
406.596.2267

Simplot
WESTERN STOCKMEN'S



[Nina Teicholz](#) is a science journalist and author of the New York Times bestseller, *The Big Fat Surprise*, which upended the conventional wisdom on dietary fat—especially saturated fat—and spurred a new conversation about whether these fats in fact cause heart disease.



Nina Teicholz has led the way for hundreds of doctors, dieticians and nutritionists to fight back against the fraudulent claim that animal fat is unhealthy. Her decades of work has led to the world carnivore month and the carnivore diet. She has fought hard to change the USDA dietary guidelines. We will be working with Nina from the industry side to help get the guidelines changed and to start getting Americans off pills and on beef. We encourage everyone reading this to buy her book, learn about why beef has been demonized for so long and how you can help change the outlook for your own future.

Scan these QR codes



Reminisce Angus Customer Feedback

- Mother Cows
- Calving



Reminisce Angus Customer Feedback

- Bull Performance
- Bull Genetics

Individual Lot Videos available!
Reminisce Angus website
www.remangus.com
www.frontierlivesale.com

Bid online sale
Visit the website
At Frontier Live Sale

Welcome to
FRONTIER
 Live Sale

www.frontierlivesale.com

Sale will be broadcast Live - View sale and Bid!
Preregistration required @ website

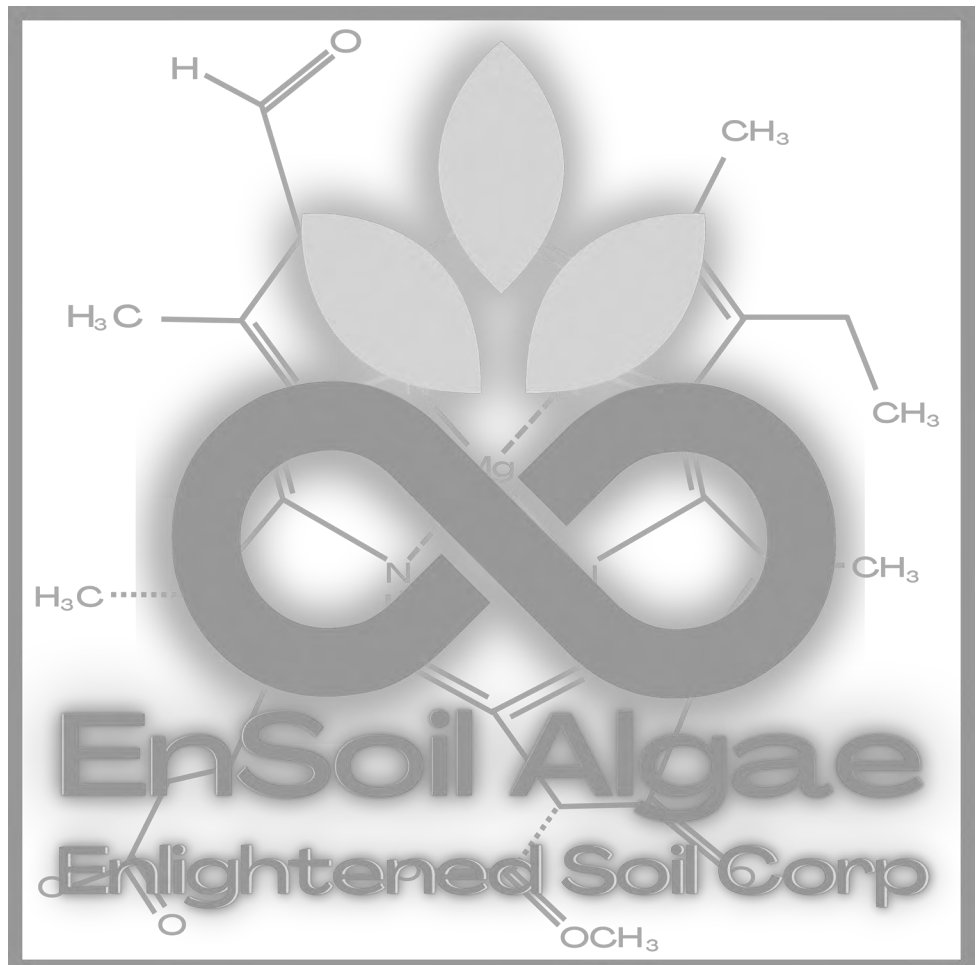


Tucker Garrigan
 Enlightened Soil Corp
 Regenerative Ag at Its Best

Ensoil Algae for Crops:
 Increase ROI
 Reduce Inputs
 Increase Yield

Improve Water Holding Capacity

Join us in the regenerative growing revolution. What's good for Soil is Good for People, Profit & the planet.



Better Together Sustainability Program

BetterFedFoods

Is excited to announce the roll out of the:
Better Together Sustainability Program



The program rewards producer participants by providing incentives, support, and tools to achieve better, more sustainable results.

Program Benefits



Soil Tests

Haney Soil Tests will be provided for baseline and secondary testing to help producers measure, track, and improve upon their soil health goals



Cattle EID Ear Tags

Cattle producers will receive EID ear tags to track individual animals, production practices, and measure performance



AgWise Platform License

Producer will receive an AgWise Platform license and assistance with onboarding and data management to support their sustainability journey



GreatOPlus (GO+) Feed nutrient is a performance feed ingredient designed to optimally deliver essential fatty acids and balance the Omega 6:3 ratio. Using our proprietary technology, GO+ delivers enhanced animal performance, improved reproductive efficiency, and boosts auto-immune response in cattle.

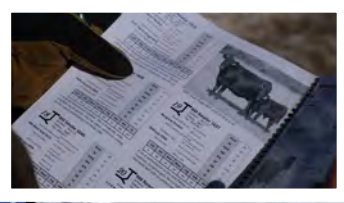
GO+ has proven to lower days to market in 1000s of beef animals as well as improved feed conversion and improved the body condition on cows and bulls.

Reminiscence Ranch customers qualify for a spring 2024 discount.

For more information. contact:

Betterfedfoods.com

Steve@betterfedfoods.com (830) 353-3199



Annual Spring Bull Sale

American Outcross -Reference Sire Group

Dunlouse Cortachy Boy D137

66 Outcross Grandsons Sell

CED	BW	WW	YW	RADG	DMI	HP	CEM	Milk	\$EN	Marb	RE	\$M	\$W	\$F	\$G	\$B	\$C
+1	+5	+10	+3	+0.02	-1.34	+7.2	+5	+0	+41	+0.39	+0.05	+15	+0	+11	+31	+41	+68

Eroco of Bankhead
 Ashley Eular
 Ashley Eulona
 Ashley Elmighty
 Champagne Cherry Bee B117
 Cherry Bee W9 of Champagne

Rambler of Newcroft
 Elanara 2 of Bankhead
 Euthedax on Douneside
 Ashley Eulina
 Everstrike of Millhouse
 Ashley Elsara
 Evan of Champagne
 Cherry Bee of Champagne



RM Scottsman 9625

30 Sons Sell

CED	BW	WW	YW	RADG	DMI	HP	CEM	Milk	\$EN	Marb	RE	\$M	\$W	\$F	\$G	\$B	\$C
-3	+1.5	+37	+59	+1.14	+1.10	+13.6	+2	+16	+23	+0.82	+0.33	+67	+36	+44	+58	+102	+199

AAA Reg - 19793944

Dunlouse Cortachy Boy D137

RM Sequel 8535
 REM Ruby 1341
 REM Ruby 1331

G A R Retail Product
 G G Queen 9361
 Bon View New Design 878
 G G Ruby 8315



RM Scottsman 9625

Scottsman is an American outcross sire that is a dominant phenotype producing bull. His progeny are easy calving, with a lot of natural, Angus vigor. They are jet black, long sided, deep flanked and wide topped. These aren't usual characteristics for high marbling cattle, but they are standard procedure at Reminisce Angus. Scottsman indexed 131 for IMF and 107 for ribeye as a yearling. He was the #2 bull out of 172 contemporaries for WDA and became the high selling bull in the 2021 Reminisce Angus bull sale. Scottsman is a game changer in the breed. He provides natural heterosis with his pedigree. His dam, RM Ruby 1341 is a product of 30 years of breeding gorgeous, high marbling, functional cows. This 13 year old beauty has the most perfect phenotype in the breed. Her daughters are made the same way.

If you remember DHD Traveler 6807, you will love Scottsman bulls.

Owned with Baltrusch Angus, Fitzsimmons Angus and Challis Creek Cattle Company.

Scottsman is a futuristic Angus bull with old world angus blood. He is a true outcross for nearly every herd in America.

NOTE HIS EPDS are not mainstream. His sire is from Scotland.



D H D Traveler 6807

Annual Spring Bull Sale

American Outcross - Reference Sires

RM McClendon 9599

8 Sons Sell

CED	BW	WW	YW	RADG	DMI	HP	CEM	Milk	\$EN	Marb	RE	\$M	\$W	\$F	\$G	\$B	\$C
+11	-1.9	+25	+37	+1.0	-.94	+12.4	+9	+14	+26	+4.6	+2.7	+28	+32	+35	+68	+168	+141

AAA Reg - 19793942

Dunlouse Cortachy Boy D137

S A V Mustang 9134

RM 2 Trend 3105

REM Juice 1314

REM Everelda Entense 5361

G G Maverick 530

REM Everelda Entense 8351

FV Everelda Entense P373



Rm McClendan 9599

RM McClendon 9599

McClendon is a half-brother to Scottsman and Dunlop. He is also a maternal brother to our record selling, RM FJB 0585, who brought \$25,000 in our 2022 sale.

He is a sure shot, problem free true, full gestation, calving standout. McClendon calves are looking for milk before they hit the ground. They are up chasing heifers around in minutes. They are very attractive cattle. He, like Scottsman are moderate in size. McClendon will deliver more live calves out of your heifers than any bull you breed to. He will moderate a cow herd in 1 generation to more sensible, functional sized with perfect udders and very maternal. As is with all Reminisce herd bulls, high marbling comes standard in every genetic package we sell.

Owned with Challis Creek Cattle Company and Fitzsimmons Angus Ranch.

RM McClendon 9599 is a true American outcross calving ease sire for nearly every herd in America.

NOTE HIS EPDS are not mainstream. His sire is from Scotland.

RM Dunlop 9609

18 Sons Sell

CED	BW	WW	YW	RADG	DMI	HP	CEM	Milk	\$EN	Marb	RE	\$M	\$W	\$F	\$G	\$B	\$C
+5	+1.2	+37	+54	+1.1	-.27	+12.2	+10	+14	+27	+6.7	+7.6	+67	+38	+38	+57	+95	+190

AAA Reg - 19793855

Dunlouse Cortachy Boy D137

G G Maverick 530

RM Maverick 530 9912

FV Barabamere Jet T023

REM Barabamere Jet 4346

RM I Trend 7528

REM Barabamere Jet 0375

FV Barabamere Jet T023



RM Dunlop 9609

Dunlop is another great American outcross sire from Reminisce Angus. His calves are long sided and deep. Dunlop is a high marbling and red meat yield sire, that will make feed efficient, grid topping cattle. His dam has raised some top selling bulls. She also raised the top Scottsman daughter we weaned in 2022. Dunlop progeny are gentle and consistent. He is also a high libido bull, covering big swathes of pasture when he is turned out. Dunlop, like Scottsman and McClendon are producing highly sought after future Reminisce Angus herd bulls. Reminisce Angus is leading the industry, "Back to the Future" with bull like Dunlop. High marbling comes standard in every genetic package we sell.

Owned with Bradley Livestock

RM Dunlop 9609 is a true American outcross sire for nearly every herd in America.

NOTE HIS EPDS are not mainstream. His sire is from Scotland.

★ **PROVEN * PREDICTABLE * REPEATABLE VALUE * BVD - PI 3 FREE** ★

Annual Spring Bull Sale

American Outcross - Reference Sires

RM Cortachy Boy 9641

5 Sons Sell

CED	BW	WW	YW	RADG	DMI	HP	CEM	Milk	\$EN	Marb	RE	\$M	\$W	\$F	\$G	\$B	\$C
+3	-.2	+16	+11	+0.03	-.98	+11.5	+6	+15	+32	+.68	+0	+53	+24	+5	+46	+51	+119

AAA Reg - 19793942

American Outcross - Sire: Dunlouse Cortachy Boy D137 / Dam: REM Winny 1338 by RM Sequel 8535

RM Cortachy Boy 9501

3 Sons Sell

CED	BW	WW	YW	RADG	DMI	HP	CEM	Milk	\$EN	Marb	RE	\$M	\$W	\$F	\$G	\$B	\$C
+3	+1.4	++39	+61	+0.15	-.38	+12.5	+7	+12	+24	+.69	+0.48	+57	+33	+57	+54	+111	+201

AAA Reg - 19793804

American Outcross - Sire: Dunlouse Cortachy Boy D137 / Dam: REM Miss Shoshone 7354 by RM 2 Trend 3105

RM Cortachy Boy 9508

2 Sons Sell

CED	BW	WW	YW	RADG	DMI	HP	CEM	Milk	\$EN	Marb	RE	\$M	\$W	\$F	\$G	\$B	\$C
+6	+.1	+38	+62	+0.16	-.23	+10.9	+11	+25	+22	+.32	+0.43	+66	+51	+49	+34	+83	+174

AAA Reg - 19793933

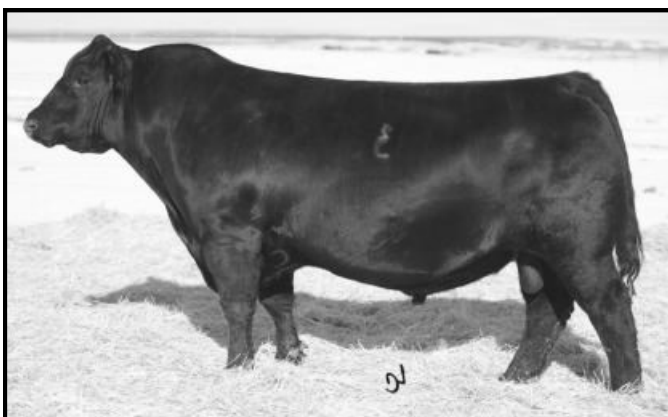
American Outcross - Sire: Dunlouse Cortachy Boy D137 / Dam: REM Lass 1358 by RM Sequel 8535

Reference Sires

Hoover Dam G18

5 Sons Sell

CED	BW	WW	YW	RADG	DMI	HP	CEM	Milk	\$EN	Marb	RE	\$M	\$W	\$F	\$G	\$B	\$C
+9	-.6	+43	+71	+0.18	-.11	+10.0	+4	+26	+16	+.51	+.56	+73	+53	+63	+48	+111	+217



SVF Gdar 216 LTD
 S A F Connection
 S A F Royal Queen 5084
SydGen C C & 7
 SydGen 1407 Corona 2016
 SydGen Forever Lady 4087
 S A F Forever Lady 8292
 G A R Grid Maker
 TC Gridiron 258
 TC Blackbird 7049
Erica of Ellston C124
 S A Neutron 377
 Erica of Ellston V65
 Shottish V047

Hoover Dam was another natural outcross bull for our genetic profile. He is the XM type and he has maintained a well balanced EPD profile for over a decade now. We flushed one of our favorite RM Sequel daughters to him and we are very pleased with the outcome. We think you'll like them too. Hoover Dam's are very consistent in phenotype. They are moderate and express a lot of muscle. His daughters are even in our herd and bred up well. He has a lot of sons in this sale that are well balanced for gain, feed efficiency, marbling and ribeye. They are eye catchers and we're leading off the sale with a good example of the rest. AAA 16124994

★ **PROVEN * PREDICTABLE * REPEATABLE VALUE * BVD - PI 3 FREE** ★

Annual Spring Bull Sale

Reference Sires

Connealy Combination 0188

9 Grandsons Sell

CED	BW	WW	YW	RADG	DMI	HP	CEM	Milk	\$EN	Marb	RE	\$M	\$W	\$F	\$G	\$B	\$C
+6	-1.1	+56	+96	+25	+08	+7.9	+6	+19	+5	+7.1	+40	+62	+60	+89	+51	+140	+244

Reference Sire:

- ◆ **RM Baron 5811** - Selling 2 sons
- ◆ **RM Combination 8806** - Selling 3 sons
Dam: **Blevins Blackcap Beauty 2438** by Blevins Band Design 9817
- ◆ **RM Combination 7519** - selling 2 sons
Dam: **REM Miss Baranda 4387** by REM's Answer 2701
- ◆ **RM Combination 7813** - selling 1 son
Dam: **REM Bell Sara 3306** by S A V Mustang 9134
- ◆ **RM Combination 8542**- selling 1 son
Dam: **REM Primrose Lady 6335** by Connealy Combination 0188



RM Baron 5811 "Baron"

2 Sons Sell

CED	BW	WW	YW	RADG	DMI	HP	CEM	Milk	\$EN	Marb	RE	\$M	\$W	\$F	\$G	\$B	\$C
+6	+2	+49	+75	+15	+10	+10.5	+3	+27	+16	+58	+43	+82	+60	+71	+45	+116	+232



- KMK Alliance 6595 187
- Connealy Consensus
- Blinda of Conanga 004
- Connealy Combination 0188**
- Connealy Tobin
- Black Cayra of Conanga 8127
- Black Camma of Conanga 4184
- Tehama Bando 155
- Generic Bando 581
- Landmark Belle 0252
- G G Queen 9361**
- Transformer 100 E A R
- Mars Queenie 547
- 3477 F A R Queen 8478

The Baron genetics are fulfilling our description of him. They are moderate, high volume powerhouse cattle! Progeny are easy fleshing, eye appealing cattle that will press down the scale at shipping time with real high marbling, Choice 2 carcass traits. Baron progeny will cross the finish line and leave money on the table for you from the number one sought after trait by feeders....feed efficiency! His daughters are broody and carry enough extra flesh to breed up in dry conditions. His progeny have been the Lot 1 sire group for three of the last four years. There are Barons this year that could wear the lot 1 tag as well. Owned with Hunt Angus.

AAA 18229734

Annual Spring Bull Sale

Reference Sires

V A R Reserve 1111

39 GrandSons Sell

CED	BW	WW	YW	RADG	DMI	HP	CEM	Milk	\$EN	Marb	RE	\$M	\$W	\$F	\$G	\$B	\$C
+9	+7	+50	+91	+22	+78	+10.3		+22	-9	+79	+85	+58	+53	+77	+63	+140	+237



Boyd New Day 8005
 B/R New Day 454
 B/R Ruby 1224
 Connealy Onward
 Sandpoint Blackbird 8809
 Riverbend Blackbird 4301

A A R New Trend
 S V F Forever Lady 57D
 B/R New Design 323
 H F Ruby 036-951
 Connealy Lead On
 Altune of Conanga 6104
 G A R Grid Maker
 Riverbend Blackbird 2204

An angus bull with "Extreme Middle" traits. Reserve transmits deep, high volume cattle with tremendous performance and carcass traits. They are gentle cattle as well. Reserve cattle are very similar to Conneally Combination, a bull we have used extensively at Reminisce. They are wide topped, easy fleshing cattle. We used Reserve successfully on cows and heifers. **Reserve daughters bred back well as 3 year-olds. They bred back well as 4 year olds.** We pride ourselves on running our cows tougher than our customers and passing on good fertility. The Reserves are exceptional. Their good dispositions were noticeable AND the sons on pasture are workhorses. AAA 16916944

RM Reserve 9804

36 Sons Sell

CED	BW	WW	YW	RADG	DMI	HP	CEM	Milk	\$EN	Marb	RE	\$M	\$W	\$F	\$G	\$B	\$C
+13	+0	+49	+88	+24	+43	+18.3	+10	+25	-3	+65	+77	+78	+49	+72	+56	+128	+244

Sire: V A R Reserve 1111

Connealy Answer 71
 Connealy Final Solution
 Este of Conanga 364

Dam: Blevins Erica 3204

Rock'n D Proficient 2915
 Blevins 1i2 Erica 1510
 Blevins Erica Design 4368

RM Reserve 9804 was one of the top selling bulls in our 2021 sale, bought by Hunt Angus. His sire has left a tremendous set of daughters. His EPDS fit our "Extreme Middle" profile. He is an easy calving sire. The calves come easy and have tremendous vigor. 9804 progeny are moderate in size and he ranks in the top 10% of the breed for dry matter and he ranks in the top 3% for heifer pregnancy. His side-by-side carcass traits are the kind we breed for. They are the kind that will reduce yield grade 4 and 5s. He was an easy choice to use in the Reminisce herd. His dam is a gentle, moderate sized, perfect uddered cow. We have good milking cows by 3204. AAA 19793910

RM Reserve 9649

2 Sons Sell

CED	BW	WW	YW	RADG	DMI	HP	CEM	Milk	\$EN	Marb	RE	\$M	\$W	\$F	\$G	\$B	\$C
+12	+1.0	+62	+106	+22	+99	+14.7	+10	+20	-9	+56	+46	+71	+57	+66	+49	+115	+220

AAA Reg - 19793880

Sire: V A R Reserve 111 / Dam: REM Eriskay Enhance 6439 by Connealy Combination 0188

RM Reserve 9811

1 Son Sell

CED	BW	WW	YW	RADG	DMI	HP	CEM	Milk	\$EN	Marb	RE	\$M	\$W	\$F	\$G	\$B	\$C
++5	+1.9	+39	+64	+18	-.23	+11.5	+8	+27	+6	+42	+62	+56	+42	+72	+44	+116	+206

AAA Reg - 19793914

Sire: V A R Reserve 111 / Dam: Blevins Blackcap 3240 by Blevins Ext Solution 4729

Annual Spring Bull Sale

Reference Sires

RM Maverick 530 9568

6 Sons Sell

CED	BW	WW	YW	RADG	DMI	HP	CEM	Milk	\$EN	Marb	RE	\$M	\$W	\$F	\$G	\$B	\$C
+12	-.2	+32	+59	+14	+19	+13.9	+10	+35	+17	+76	+21	+80	+51	+68	+48	+116	+230



G G Maverick 530

Back by popular demand is this great Maverick 530 son. We sold bulls out of him 2 years ago and your response was breed more, so we did. These bulls do a lot of things behind the scene. The first is, both his parents are well known for marbling, ribeye and longevity in the Reminisce herd. They are well structured and have good dispositions. His numbers reflect an older pedigree, which makes them sleepers in the sale. AAA 16522871

G G Maverick 530

B A R Ext Traveler 205
C R A Bextor 872 5205 608
Cra Lady Jaye 608 498 S Easy

G G Della 3320

B/R New Design 036

G G Della 0101

Tehama Bando 155

Generic Bando 581

Landmark Belle 0252

G G Queen 9361

Mars Queenie 547

Transformer 100 E A R

3477 F A R Queen 8478



RM Maverick 530 9912 - Son of G G Maverick 530



Reference Sire

Soo Line Motive 9016

Sire - HF Kodiak 5R by Sandy Bar Advantage 43M

Dam - TLA Beauty 5R by RR 7407 Rainmaker 2154

CED +5, BW +.3, WW +47, YW +84

RADG +.22, DMI +.27, HP +12.8, CEM -2, Milk +22, \$EN +0

Marb +.17, RE +.54, \$M +60, \$W +50, \$F +95, \$G +25, \$B +120, \$C +216

RM Motive 7541

6 Sons Sell

CED	BW	WW	YW	RADG	DMI	HP	CEM	Milk	\$EN	Marb	RE	\$M	\$W	\$F	\$G	\$B	\$C
+9	-.1	+44	+71	+18	-.03	+13.0	+5	+25	+3	+05	+57	+64	+49	+80	+22	+101	+195

AAA Reg - 19105479

Sire: Soo Line Motive 9016 / Dam: REM Blackbird 5320 by REM Big West 2336

RM Motive 9503

8 Sons Sell

CED	BW	WW	YW	RADG	DMI	HP	CEM	Milk	\$EN	Marb	RE	\$M	\$W	\$F	\$G	\$B	\$C
+13	-2.1	+44	+81	+21	-.01	+15.8	+4	+32	-3	+43	+57	+69	+54	+95	+39	+135	+244

AAA Reg - 19793805

Sire: Soo Line Motive 9016 / Dam: REM Erica 9368 by RM I Trend 7528

FOOT NOTE TERM DEFINITIONS AND ABBREVIATIONS

EXTREME MIDDLE (XM)- We do not focus on any one trait to an extreme level. We maximize the limits of moderation in every trait. Genetic traits are similar to the nutritional value of vitamins and minerals and how they interact with each other.

We start with a functional cow, which is one that can walk (Structure) and is willing to live within the parameters of your place (Disposition). Can she have a healthy calf on her own,(not too big, not too small). If it gets up quickly (vigor), will it be able to nurse (nice udder), will she let it (maternal).

That was easy, now how will the little rascal do amongst his or her peers (performance). Will this cow be willing to do this again next year (fertility)? Once jr. and let's assume at this point that jr. is a he, is weaned and goes on to get his performance degree, will he add value with a few extra pounds. Can he do this without eating part of the other calves ration (feed efficiency), if so he has now gained his masters in performance and is ready for the final test of carcass quality.

Carcass quality (marbling and ribeye) is just icing on the cake, but if jr. has added value in his other traits, the icing is yours to keep, if not, its not enough to cover the losses to this point. Ribeye is important as it is the measurement for total red meat yield (RMY) on a carcass, marbling retrieves more added value.

As you can see the extreme middle is anything but average. They have to do it all in a predictable repeatable way for us to be profitable. We do have cattle in some traits that rank in the top percentiles of that trait, but we do not focus on that one particular trait and continue to maximize it. This is why we have been able to make them better without making them bigger.

This is the measurable difference in genetic philosophy.

OVER AND UNDER- Over 50 for WW epd and under 100 for YW epd.

RMY- Red Meat Yield



Notes:

1 **RM Combination 7519 2801**
 Birthdate: 05/09/22
 Tattoo: 2801
 Reg: 20663688

Marb	.46
RE	.52
RADG	.25
DMI	.51
\$EN	-7
HP	16.2
\$M	91
\$B	124
\$C	252

Connealy Combination 0188
 Black Cayra of Conanga 8127

RM Combination 7519
 REM's Answer 2701
 REM Miss Baranda 4387
 FV Miss Baranda R218
 Connealy Consensus

Connealy Combination 0188
 Black Cayra of Conanga 8127

SMB Queen Solution 6858
 Blevins Schurrtop Solution
 Blevins Queen Solution 9629
 Blevins Gamble Design 5405

CED	BW	Birth	Wean	Yrlg	CEM	Milk	WR	YR
7	85	-.2	71	115	9	26	117	116

A double bred Combination bull, whose dam had a sale topper in 2022. We don't breed for big yearling weights, but this one crashed the barrier!

2 **RM Reserve 2558**
 Birthdate: 06/03/22
 Tattoo: 2558
 Reg: 20663584

Marb	.66
RE	.79
RADG	.28
DMI	1.07
\$EN	-14
HP	17.3
\$M	70
\$B	149
\$C	263

B/R New Day 454
 V A R Reserve 1111
 Sandpoint Blackbird 8809

RM Reserve 9804
 Connealy Final Solution
 Blevins Erica 3204
 Blevins 112 Erica 1510
 RM I Trend 7528

REM Natural 1812
 Blevins Queen Solution 9629

REM Rita 6447
 Sinclair Rito Legacy 3R9
 JVC Rita 6132 880
 V A R Rita 6132

CED	BW	Birth	Wean	Yrlg	CEM	Milk	WR	YR
21	74	-2.7	55	106	18	29	110	114

Back to the Future with this one! This bull's dam comes from old blood, well a lot of our bulls come from old blood now and we are finding it's a good thing. There is a big spread here from BW to YW, not too much milk, high HP, side by side carcass EPDS and a 1.34 red meat yield.

"I probably don't need a bull for this year, but I don't want to get behind at the same time. We have been running Reminisce Angus bulls for 13 years in tough mountain country, and have only lost 1 to a fight in the corral. They cover country, they hold flesh, and they breed every cow. They are true honest bulls that have been proven to last, Bryan and Marcia take the guessing out, you're only getting the best."

Casey Fitzsimmons, Fitzsimmons Land & Cattle

3 **RM Resolve 2609**
 Birthdate: 05/02/22
 Tattoo: 2609
 Reg: 20667679

Marb	1.04
RE	.92
RADG	.25
DMI	1.60
\$EN	-13
HP	16.2
\$M	65
\$B	168
\$C	283

PA Power Tool 9108
 SydGen Multi Tool 2432
 SydGen Ester 9089

SydGen Resolve 7132
 SydGen FATE 2800
 SydGen Dixie Erica 5104
 Werner Dixie Erica 3045
 Connealy Lead On

Connealy Onward
 Altune of Conanga 6104

RMV Gammer 8034
 Rockn D Ambush 1531
 Three Trees Gammer 1322
 Bon View Gammer 85

CED	BW	Birth	Wean	Yrlg	CEM	Milk	WR	YR
16	86	-1.1	65	119	12	16	100	100

4 **RM Resolve 2602**
 Birthdate: 05/02/22
 Tattoo: 2602
 Reg: 20667678

Marb	.71
RE	.87
RADG	.24
DMI	1.47
\$EN	-15
HP	16.2
\$M	64
\$B	138
\$C	243

PA Power Tool 9108
 SydGen Multi Tool 2432
 SydGen Ester 9089

SydGen Resolve 7132
 SydGen FATE 2800
 SydGen Dixie Erica 5104
 Werner Dixie Erica 3045
 Connealy Lead On

Connealy Onward
 Altune of Conanga 6104

RMV Gammer 8034
 Rockn D Ambush 1531
 Three Trees Gammer 1322
 Bon View Gammer 85

CED	BW	Birth	Wean	Yrlg	CEM	Milk	WR	YR
13	86	.6	62	114	5	26	100	100

Higher, higher, higher with these two calving ease standouts. High HP and they are two of the highest IMF and rib eye bulls in the sale

5 **RM Maverick 9568 2911**
 Birthdate: 05/22/22
 Tattoo: 2911
 Reg: 20663768

Marb	.46
RE	.33
RADG	.17
DMI	.60
\$EN	9
HP	5.4
\$M	53
\$B	110
\$C	196

C R A Bextor 872 5205 608
 G G Maverick 530
 G G Della 3320

RM Maverick 530 9568
 Generic Bando 581
 G G Queen 9361
 Mars Queenie 547
 B/R B A R Fast Forward1193

Lafins Fast Forward 5102
 Lafins Galaxie 758 E

FV Forever Trendy T279
 Rockn D Ambush 1531
 V A R Forever Trendy 3039
 T R A Forever Trendy 553

CED	BW	Birth	Wean	Yrlg	CEM	Milk	WR	YR
12	102	-.3	38	73	10	31	100	100

We flushed this bull's dam when she was 12. His sire is by the great 9361 cow, that has had the most influence in this herd. He has pretty impressive numbers for being out of such an old cow, still in production. When you see him, you won't care about his numbers.



RM McClendon 9599
An American Outcross

6 RM Dunlop 2591

Birthdate: 06/07/22
Tattoo: 2591
Reg: 20663611

Ashley Euler
Dunlouise Cortachy Boy D137
Champagne Cherry Bee B117

RM Dunlop 9609

RM Maverick 530 9912
REM Barbaramere Jet 4346

REM Barbaramere Jet 0375
G A R Retail Product

RM Sequel 8535
G G Queen 9361

REM Barbaramere 1326

Isu Imaging Q 9111
REM Barbaramere 7314
REM Barbaramere 5305

Marb	.76
RE	.55
RADG	.15
DMI	1.14
\$EN	15
HP	12.7
\$M	76
\$B	100
\$C	206

CED	BW	Birth	Wean	Yrlg	CEM	Milk	WR	YR
5	88	1.5	41	76	1	29	106	114

American Outcross - The stoutest Dunlop in the sale. His dam is a proven gem with an impeccable udder and perfect feet. This bull is a plus in every category you need him to be.

7 RM Dunlop 2203

Birthdate: 06/07/22
Tattoo: 2203
Reg: 20663551

Ashley Euler
Dunlouise Cortachy Boy D137
Champagne Cherry Bee B117

RM Dunlop 9609

RM Maverick 530 9912
REM Barbaramere Jet 4346

REM Barbaramere Jet 0375
Cole Creek Black Cedar

Cole Creek Black Seal 230
Cole Creek Juanada G 53T

REM Lass 5205

REM Natural 1812
REM Lass 3336
REM Lass 5351

Marb	.79
RE	.43
RADG	.16
DMI	.98
\$EN	-3
HP	15.5
\$M	71
\$B	125
\$C	233

CED	BW	Birth	Wean	Yrlg	CEM	Milk	WR	YR
12	80	-1.1	50	86	12	26	112	113

American Outcross - Another Dunlop standout at 50 for WW. That's real performance considering his Scottish grandsire is only +10 for WW. This bull is also in the top 1% of the breed for feed efficiency!

8 RM McClendon 2526

Birthdate: 05/15/22
Tattoo: 2526
Reg: 20663562

Ashley Euler
Dunlouise Cortachy Boy D137
Champagne Cherry Bee B117

RM McClendon 9599

RM 2 Trend 3105
REM Everelda Entense 5361

REM Everelda Entense 8351
B/R New Day 454

V A R Reserve 1111
Sandpoint Blackbird 8809

REM Lady 0395

REM Natural 1812
REM Lady 4338
REM Lady 0320

Marb	.31
RE	.76
RADG	.16
DMI	.47
\$EN	12
HP	9.2
\$M	68
\$B	87
\$C	181

CED	BW	Birth	Wean	Yrlg	CEM	Milk	WR	YR
9	70	-6	50	85	6	20	105	114

American Outcross - This bull's a game changer. Like so many we have commented on before. We are very grateful his YW EPD is under 100 or all the semen outfits would find him. He is a sure shot calving ease bull, top 10% DMI, big ribeye posting a 1.40 RMY

9 RM 2Trend 8631 2593

Birthdate: 06/08/22
Tattoo: 2593
Reg: 20663613

S A V Mustang 9134
RM 2 Trend 3105
REM Juice 1314

RM 2Trend 8631

RM Sequel 8535
REM Quality Lady 2333

RM Quality Lady 8391
B/R New Day 454

V A R Reserve 1111
Sandpoint Blackbird 8809

REM Blackbird Direct 0344

Connealy Combination 0188
SMB Blackbird Direct 7850
SMB Blackbird Direct 5863

Marb	.62
RE	.52
RADG	.19
DMI	.50
\$EN	1
HP	11.6
\$M	75
\$B	109
\$C	216

CED	BW	Birth	Wean	Yrlg	CEM	Milk	WR	YR
11	77	.1	46	83	14	32	117	109

Calving ease, side by side carcass EPDs, 1.36 RMY, top 15% DMI. He is moderate and square

10 RM Maverick 9568 2506

Birthdate: 05/09/22
Tattoo: 2506
Reg: 20663760

ET

Marb	.65
RE	.75
RADG	.23
DMI	.56
\$EN	4
HP	17.4
\$M	80
\$B	126
\$C	243

G G Maverick 530 C R A Bextor 872 5205 608

RM Maverick 530 9568

G G Della 3320
Generic Bando 581

G G Queen 9361

Mars Queenie 547
Connealy Lead On

Connealy Onward

Altune of Conanga 6104

RMV Gammer 8034

Rockn D Ambush 1531

Three Trees Gammer 1322
Bon View Gammer 85

CED	BW	Birth	Wean	Yrlg	CEM	Milk	WR	YR
10	82	1.3	56	95	4	23	100	100

13 RM Maverick 9568 2515

Birthdate: 05/15/22
Tattoo: 2515
Reg: 20663766

ET

Marb	.70
RE	.40
RADG	.19
DMI	.46
\$EN	22
HP	16.1
\$M	96
\$B	116
\$C	246

G G Maverick 530 C R A Bextor 872 5205 608

RM Maverick 530 9568

G G Della 3320
Generic Bando 581

G G Queen 9361

Mars Queenie 547
Connealy Lead On

Connealy Onward

Altune of Conanga 6104

RMV Gammer 8034

Rockn D Ambush 1531

Three Trees Gammer 1322
Bon View Gammer 85

CED	BW	Birth	Wean	Yrlg	CEM	Milk	WR	YR
11	85	1.2	56	92	9	18	100	100

11 RM Maverick 9568 2509

Birthdate: 05/11/22
Tattoo: 2509
Reg: 20663763

ET

Marb	.54
RE	.42
RADG	.18
DMI	.65
\$EN	16
HP	17.4
\$M	79
\$B	94
\$C	201

G G Maverick 530 C R A Bextor 872 5205 608

RM Maverick 530 9568

G G Della 3320
Generic Bando 581

G G Queen 9361

Mars Queenie 547
Connealy Lead On

Connealy Onward

Altune of Conanga 6104

RMV Gammer 8034

Rockn D Ambush 1531

Three Trees Gammer 1322
Bon View Gammer 85

CED	BW	Birth	Wean	Yrlg	CEM	Milk	WR	YR
12	68	.6	41	76	4	21	100	100

14 RM Maverick 9568 2518

Birthdate: 05/18/22
Tattoo: 2518
Reg: 20663767

ET

Marb	.52
RE	.47
RADG	.20
DMI	.53
\$EN	14
HP	13.6
\$M	82
\$B	111
\$C	226

G G Maverick 530 C R A Bextor 872 5205 608

RM Maverick 530 9568

G G Della 3320
Generic Bando 581

G G Queen 9361

Mars Queenie 547
Connealy Lead On

Connealy Onward

Altune of Conanga 6104

RMV Gammer 8034

Rockn D Ambush 1531

Three Trees Gammer 1322
Bon View Gammer 85

CED	BW	Birth	Wean	Yrlg	CEM	Milk	WR	YR
11	65	.3	51	87	10	30	100	100

12 RM Maverick 9568 2511

Birthdate: 05/12/22
Tattoo: 2511
Reg: 20663765

ET

Marb	.55
RE	.33
RADG	.17
DMI	.09
\$EN	20
HP	13.0
\$M	74
\$B	97
\$C	200

G G Maverick 530 C R A Bextor 872 5205 608

RM Maverick 530 9568

G G Della 3320
Generic Bando 581

G G Queen 9361

Mars Queenie 547
Connealy Lead On

Connealy Onward

Altune of Conanga 6104

RMV Gammer 8034

Rockn D Ambush 1531

Three Trees Gammer 1322
Bon View Gammer 85

CED	BW	Birth	Wean	Yrlg	CEM	Milk	WR	YR
9	80	-.2	35	62	7	27	100	100



G G Maverick 530
Sire: RM Maverick 530 9568

RM Maverick 530 9568 has been a long time favorite at Reminisce sales. This will be the last group of bulls to sell by this great Reminisce herd sire. Our longtime customers know this bull is a maternal brother to RM Big West 2336, RM Sequel 8535 and RM Baron 5811. Good Feet, udder, disposition, volume, feed efficiency, performance and marbling are all the good reasons to buy bulls with our G G Queen 9361 cow in there pedigree.

15 RM Reserve 2562

Birthdate: 06/03/22
Tattoo: 2562
Reg: 20663588

Marb	.97
RE	.43
RADG	.18
DMI	.70
\$EN	0
HP	19.9
\$M	94
\$B	122
\$C	252

V A R Reserve 1111 B/R New Day 454
Sandpoint Blackbird 8809
RM Reserve 9804 Connealy Final Solution
Blevins Erica 3204 Blevins 112 Erica 1510
Connealy Combination 0188
RM Baron 5811 G G Queen 9361
REM Ruby 8308 REM Natural 1812
REM Ruby 5315 REM Ruby 1341

CED	BW	Birth	Wean	Yrlg	CEM	Milk	WR	YR
16	78	-2.3	51	84	14	29	103	107

Our favorite performance EPDS are bulls with over 50 for WW and under 100 YW. This high marbling Reserve standout also posts a 1.26 RMY

19 RM Reserve 2524

Birthdate: 05/15/22
Tattoo: 2524
Reg: 20663560

Marb	1.10
RE	.62
RADG	.20
DMI	.26
\$EN	14
HP	18.0
\$M	95
\$B	122
\$C	253

V A R Reserve 1111 B/R New Day 454
Sandpoint Blackbird 8809
RM Reserve 9804 Connealy Final Solution
Blevins Erica 3204 Blevins 112 Erica 1510
Connealy Impression
Byergo Big Easy 2601 Byergo Miss Elia 6153
REM Primrose 0353 REM's Answer 2701
REM Primrose 4343 REM Primrose 8353

CED	BW	Birth	Wean	Yrlg	CEM	Milk	WR	YR
19	69	-2.7	47	78	13	29	101	105

This bull will be pleasing to everyone on sale day. He is the number one IMF EPD bull in the sale, AND the rest of his numbers go right along with the stature of this great bull.

16 RM Reserve 2914

Birthdate: 06/06/22
Tattoo: 2914
Reg: 20663707

Marb	.84
RE	.64
RADG	.23
DMI	.20
\$EN	5
HP	21.0
\$M	82
\$B	137
\$C	260

V A R Reserve 1111 B/R New Day 454
Sandpoint Blackbird 8809
RM Reserve 9804 Connealy Final Solution
Blevins Erica 3204 Blevins 112 Erica 1510
G A R Retail Product
RM Sequel 8535 G G Queen 9361
REM Everelda Entense 0023 Bon View New Design 1407
FV Everelda Entense P006 FV Everelda Entense 0153

CED	BW	Birth	Wean	Yrlg	CEM	Milk	WR	YR
9	80	-1.1	45	82	9	29	109	112

Look at the numbers on this Reserve bull, out of a 14 year old dam that is bred back AI AGAIN this year! His dam posts 12 calves at BW 101, WW 108, YW 105, IMF 113, RE 103. This bull is also in the top 5 % of the breed for DMI

20 RM Dunlop 2707

Birthdate: 06/06/22
Tattoo: 2707
Reg: 20663685

Marb	.52
RE	.58
RADG	.11
DMI	.42
\$EN	23
HP	12.9
\$M	69
\$B	91
\$C	187

Ashley Euler
Dunlouse Cortachy Boy D137 Champagne Cherry Bee B117
RM Dunlop 9609 RM Maverick 530 9912
REM Barabaramere Jet 4346 REM Barabaramere Jet 0375
S A V Pioneer 7301
JVC Pioneer X080 Basin Lucy 5278
MJB Erica 3732 RM Sequel 8535
MJB Erica 1710 MJB Erica 9743

CED	BW	Birth	Wean	Yrlg	CEM	Milk	WR	YR
5	85	.6	43	65	14	15	110	100

A good Dunlop out of the best Pioneer daughter we have ever raised. Solid from end to end on EPDS and type. Side by side carcass EPDs.

17 RM Reserve 2587

Birthdate: 06/07/22
Tattoo: 2587
Reg: 20663607

Marb	.59
RE	.60
RADG	.16
DMI	.49
\$EN	-2
HP	14.9
\$M	80
\$B	119
\$C	234

V A R Reserve 1111 B/R New Day 454
Sandpoint Blackbird 8809
RM Reserve 9804 Connealy Final Solution
Blevins Erica 3204 Blevins 112 Erica 1510
Redland Game Day 373
Redland Game Game 325 Redland Eppionia 306
REM Queenie 9472 Cole Creek Black Seal 230
REM Queenie 5102 REM Queenie 3335

CED	BW	Birth	Wean	Yrlg	CEM	Milk	WR	YR
10	76	-.2	56	86	5	37	125	113

A moderate champ here. Calving ease, over 50 for WW, less than 100 for YW, side by side carcass EPDs, 1.31 RMY, top 14% DMI

21 RM Dunlop 2560

Birthdate: 06/03/22
Tattoo: 2560
Reg: 20663586

Marb	.84
RE	.61
RADG	.18
DMI	.16
\$EN	13
HP	13.3
\$M	81
\$B	130
\$C	250

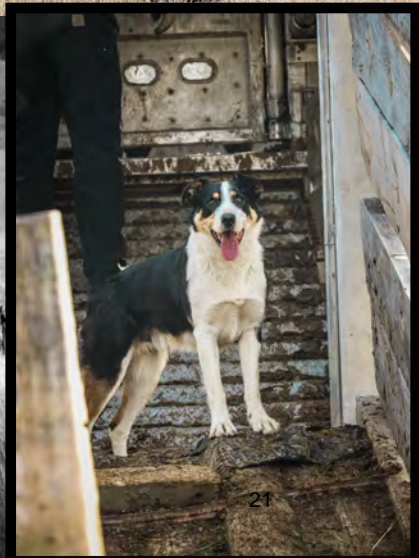
Ashley Euler
Dunlouse Cortachy Boy D137 Champagne Cherry Bee B117
RM Dunlop 9609 RM Maverick 530 9912
REM Barabaramere Jet 4346 REM Barabaramere Jet 0375
Connealy Combination 0188
RM Baron 5811 G G Queen 9361
REM Blackbird 8347 REM Natural 1812
REM Blackbird 6425 Blevins Blackbird 9698

CED	BW	Birth	Wean	Yrlg	CEM	Milk	WR	YR
4	87	.8	55	87	11	20	114	105

Outcross genetics...This Dunlop x Baron cross does a nice job filling all the boxes across the board. He comes from a long line of high volume females.



12-11-23
We sold the rest of you
The Brier Herd (working) 2800





22 RM Dunlop 2604

Birthdate: 06/08/22
Tattoo: 2604
Reg: 20663622

Marb	.60
RE	.74
RADG	.18
DMI	.41
\$EN	11
HP	8.8
\$M	70
\$B	108
\$C	210

Ashley Euler
Dunlouise Cortachy Boy D137
Champagne Cherry Bee B117

RM Dunlop 9609

RM Maverick 530 9912
REM Barbaramere Jet 4346
REM Barbaramere Jet 0375
S A V Mustang 9134
RM 2 Trend 3105

REM Database Queen 6419

REM Juice 1314
REM Natural 1812
SMB Database Queen 3825
Blevins Database Queen 3474

CED	BW	Birth	Wean	Yrlg	CEM	Milk	WR	YR
10	88	1.1	52	86	13	27	107	104

Another Dunlop that will make a lot of lists on sale day, so will his brother next year. Over 50, under 100 for WW and YW; That's how we make them, that's how we like them, along with side by side carcass EPDS and a 1.20 RMY

Reference Sire of Lot 23 RM Dunlop 9609

American Outcross- One of the best we've put through the sale ring, by a homerun cow that has always raised top calves! She is a descendant of our largest cow family, which is also our highest marbling cow family. Look at this bell curve from 8 calves:

BW 93, WW 106, YW 104, IMF 115, RE 106.

This American outcross standout by RM Dunlop 9609 also posts individual IMF of 134, RE 112 and a red meat yield of 1.38.



Each year our Lot 23 bull has to go through the same intense scrutiny as our Cattle Baron Cigars. From quality of the leaves, through the rigorous fermenting and then the final aging; all done in a natural environment, which is a challenge. This process takes close to 18 months and is passed through many, many hands during this delicate process. But the time and effort is well worth it, as our cigars are rated 90-93 and that is an enviable benchmark to reach in the cigar world.

There are many Lot 23 contenders, but only one wears the crown each year!



23 RM Dunlop 2638

Birthdate: 06/14/22
Tattoo: 2638
Reg: 20663647

Marb	.79
RE	.85
RADG	.23
DMI	-.15
\$EN	16
HP	15.2
\$M	83
\$B	153
\$C	281

Ashley Euler
Dunlouise Cortachy Boy D137
Champagne Cherry Bee B117

RM Dunlop 9609

RM Maverick 530 9912
REM Barbaramere Jet 4346
REM Barbaramere Jet 0375
RM I Trend 7528
REM Natural 1812

REM Barbaramere 3340

Blevins Queen Solution 9629
RM Sequel 8535
REM Barbaramere 1342
REM Barbaramere 5305

CED	BW	Birth	Wean	Yrlg	CEM	Milk	WR	YR
9	86	.7	45	83	15	27	111	105



Shepherd's Garage, Inc.

Jackson, MT.
406-834-3143

Dillon, MT.
406-683-2018



24 RM Reserve 2610

Birthdate: 06/08/22
Tattoo: 2610
Reg: 20663627

Marb	.41
RE	.49
RADG	.19
DMI	.01
\$EN	15
HP	18.3
\$M	102
\$B	97
\$C	228

V A R Reserve 1111 B/R New Day 454
Sandpoint Blackbird 8809

RM Reserve 9804

Blevins Erica 3204
Connealy Final Solution
Blevins 1i2 Erica 1510
Connealy Combination 0188

RM Baron 5811

REM Blackbird 8411

G G Queen 9361
RM I Trend 7528
REM Blackbird 6314
M J B Blackbird 3709

CED	BW	Birth	Wean	Yrlg	CEM	Milk	WR	YR
7	88	.5	46	75	11	27	108	102

This nice square bull is out of a nice, moderate square cow. He has a high HP and side by side carcass EPDs AND a 1.34 RMY

25 RM Scottsman 2619

Birthdate: 06/10/22
Tattoo: 2619
Reg: 20663635

Marb	.60
RE	.55
RADG	.13
DMI	.17
\$EN	18
HP	16.9
\$M	89
\$B	97
\$C	215

Ashley Eular
Dunlouse Cortachy Boy D137
Champagne Cherry Bee B117

RM Scottsman 9625

REM Ruby 1341

RM Sequel 8535

REM Precision 1547

Rem Ruby 1331

FV Precision T273

REM Blackbird 6357

REM Dixie 4392

SMB Dixie 1318

RM Maverick 530 9568

REM Dixie 9328

CED	BW	Birth	Wean	Yrlg	CEM	Milk	WR	YR
5	82	.5	45	67	5	24	111	105

I am pretty partial to this Scottsman. Like all of them, which you will notice on sale day, they are incredibly uniform in phenotype. High HP, \$EN, RMY, side by side carcass EPDs and low DMI

26 RM Hoover Dam 2624

Birthdate: 06/11/22
Tattoo: 2624
Reg: 20666277

Marb	.55
RE	.29
RADG	.24
DMI	.37
\$EN	-7
HP	11.2
\$M	70
\$B	121
\$C	227

SydGen C C & 7 S A F Connection
SydGen Forever Lady 4087

Hoover Dam

Erica of Ellston C124
Erica of Ellston V65
S A V Pioneer 7301

JVC Pioneer X080

REM Blackbird 3344

Basin Lucy 5278
RM Sequel 8535
REM Blackbird 1336
REM Blackbird 5320

CED	BW	Birth	Wean	Yrlg	CEM	Milk	WR	YR
0	88	2.0	59	102	6	32	107	112

Here is a good thick bull by one of our donors cows, whose full brother was a favorite last year. If you didn't get a Hoover dam last year, latch on to this one!

27 RM Hoover Dam 2513

Birthdate: 05/12/22
Tattoo: 2513
Reg: 20666280

ET

Marb	.31
RE	.87
RADG	.24
DMI	.76
\$EN	-13
HP	13.9
\$M	66
\$B	127
\$C	231

SydGen C C & 7 S A F Connection
SydGen Forever Lady 4087

Hoover Dam

Erica of Ellston C124
Erica of Ellston V65
Connealy Lead On

Connealy Onward

RMV Gammer 8034

Altune of Conanga 6104
Rockn D Ambush 1531
Three Trees Gammer 1322
Bon View Gammer 85

CED	BW	Birth	Wean	Yrlg	CEM	Milk	WR	YR
11	83	-.1	62	105	13	22	100	100

Here is a Hoover Dam with exceptional growth; high HP, and a big rib eye, indexing 122 in this herd. Reminisce is a leader in the industry for RMY.

28 RM Reserve 2803

Birthdate: 05/28/22
Tattoo: 2803
Reg: 20663690

Marb	.48
RE	.50
RADG	.20
DMI	.09
\$EN	18
HP	13.0
\$M	64
\$B	83
\$C	172

V A R Reserve 1111 B/R New Day 454
Sandpoint Blackbird 8809

RM Reserve 9804

Blevins Erica 3204
Connealy Final Solution
Blevins 1i2 Erica 1510
RM I Trend 7528
REM Natural 1812
Blevins Queen Solution 9629

SMB Ann Plains 5868

H A R B High Plains 975 JH
Blevins Ann Plains 5460
Blevins Ann Rito 9M9 6066

CED	BW	Birth	Wean	Yrlg	CEM	Milk	WR	YR
20	68	-2.9	38	66	16	19	93	103

A Marchessault special here. Low BW, lots of growth, side by side carcass traits and a high \$EN



29 RM Scottsman 2578

Birthdate: 06/06/22
Tattoo: 2578
Reg: 20663601

Ashley Euler
Dunlouse Cortachy Boy D137
Champagne Cherry Bee B117

RM Scottsman 9625

REM Ruby 1341

RM Sequel 8535

Rem Ruby 1331

Connealy Consensus

Connealy Combination 0188

Black Cayra of Conanga 8127

REM Miss Shoshone 6436

G G Maverick 530

MJB Miss Shoshone 1722

FV Miss Shoshone R401

Marb	.41
RE	.32
RADG	.21
DMI	.30
\$EN	1
HP	12.3
\$M	73
\$B	112
\$C	218

CED	BW	Birth	Wean	Yrlg	CEM	Milk	WR	YR
-6	86	3.2	61	98	3	20	118	111

American Outcross - This is the only bull in the sale that is over 60 for WW and under 100. There are few like this in the breed.

30 RM Scottsman 2204

Birthdate: 06/08/22
Tattoo: 2204
Reg: 20663549

Ashley Euler
Dunlouse Cortachy Boy D137
Champagne Cherry Bee B117

RM Scottsman 9625

REM Ruby 1341

RM Sequel 8535

Rem Ruby 1331

S A V Mustang 9134

RM 2 Trend 3105

REM Juice 1314

REM Barbaramere 5254

RM Sequel 8535

REM Barbaramere 1342

REM Barbaramere 5305

Marb	.77
RE	.51
RADG	.21
DMI	.37
\$EN	8
HP	12.5
\$M	66
\$B	126
\$C	229

CED	BW	Birth	Wean	Yrlg	CEM	Milk	WR	YR
1	82	2.0	45	82	10	22	104	117

American Outcross - One of the top Scottsman we will sell and you will see why. He is by a great 2 Trend daughter. She comes from the largest cow family we have, which is also the highest marbling cow family.

31 RM Scottsman 2501

Birthdate: 05/02/22
Tattoo: 2501
Reg: 20848398

Ashley Euler
Dunlouse Cortachy Boy D137
Champagne Cherry Bee B117

RM Scottsman 9625

REM Ruby 1341

RM Sequel 8535

Rem Ruby 1331

Connealy Lead On

Connealy Onward

Altune of Conanga 6104

RMV Gammer 8034

Rockn D Ambush 1531

Three Trees Gammer 1322

Bon View Gammer 85

ET

Marb	.98
RE	.46
RADG	.16
DMI	.55
\$EN	21
HP	17.6
\$M	82
\$B	127
\$C	247

CED	BW	Birth	Wean	Yrlg	CEM	Milk	WR	YR
13	83	-1.4	39	68	10	20	100	100

33 RM Scottsman 2508

Birthdate: 05/10/22
Tattoo: 2508
Reg: 20663762

Ashley Euler
Dunlouse Cortachy Boy D137
Champagne Cherry Bee B117

RM Scottsman 9625

REM Ruby 1341

RM Sequel 8535

Rem Ruby 1331

Connealy Lead On

Connealy Onward

Altune of Conanga 6104

RMV Gammer 8034

Rockn D Ambush 1531

Three Trees Gammer 1322

Bon View Gammer 85

ET

Marb	.47
RE	.59
RADG	.17
DMI	.35
\$EN	14
HP	15.3
\$M	75
\$B	97
\$C	201

CED	BW	Birth	Wean	Yrlg	CEM	Milk	WR	YR
6	80	.9	44	75	7	22	100	100

32 RM Scottsman 2502

Birthdate: 05/05/22
Tattoo: 2502
Reg: 20663757

Ashley Euler
Dunlouse Cortachy Boy D137
Champagne Cherry Bee B117

RM Scottsman 9625

REM Ruby 1341

RM Sequel 8535

Rem Ruby 1331

Connealy Lead On

Connealy Onward

Altune of Conanga 6104

RMV Gammer 8034

Rockn D Ambush 1531

Three Trees Gammer 1322

Bon View Gammer 85

ET

Marb	.31
RE	.58
RADG	.17
DMI	.23
\$EN	22
HP	14.1
\$M	75
\$B	93
\$C	196

CED	BW	Birth	Wean	Yrlg	CEM	Milk	WR	YR
11	80	-.8	45	75	9	14	100	100

34 RM Scottsman 2510

Birthdate: 05/11/22
Tattoo: 2510
Reg: 20663764

Ashley Euler
Dunlouse Cortachy Boy D137
Champagne Cherry Bee B117

RM Scottsman 9625

REM Ruby 1341

RM Sequel 8535

Rem Ruby 1331

Connealy Lead On

Connealy Onward

Altune of Conanga 6104

RMV Gammer 8034

Rockn D Ambush 1531

Three Trees Gammer 1322

Bon View Gammer 85

ET

Marb	.73
RE	.32
RADG	.19
DMI	.20
\$EN	8
HP	16.7
\$M	77
\$B	119
\$C	231

CED	BW	Birth	Wean	Yrlg	CEM	Milk	WR	YR
8	70	-.2	49	81	6	20	100	100

American Outcross - This entire flush can be used on heifers and you will have a dynamite, high marbling set of calves

35

RM Hoover Dam 2514

Birthdate: 05/13/22
Tattoo: 2514
Reg: 20666281

ET

S A F Connection

SydGen C C & 7

SydGen Forever Lady 4087

Hoover Dam

Erica of Ellston C124

TC Gridiron 258

Erica of Ellston V65

Connealy Lead On

Connealy Onward

Altune of Conanga 6104

RMV Gammer 8034

Three Trees Gammer

Rockn D Ambush 1531

1322

Bon View Gammer 85

Marb	.50
RE	.56
RADG	.18
DMI	-.11
\$EN	16
HP	9.8
\$M	72
\$B	111
\$C	216

CED	BW	Birth	Wean	Yrlg	CEM	Milk	WR	YR
9	79	-.6	43	71	4	26	100	100

36

RM Hoover Dam 2516

Birthdate: 05/16/22
Tattoo: 2516
Reg: 20666283

ET

S A F Connection

SydGen C C & 7

SydGen Forever Lady 4087

Hoover Dam

Erica of Ellston C124

TC Gridiron 258

Erica of Ellston V65

Connealy Lead On

Connealy Onward

Altune of Conanga 6104

RMV Gammer 8034

Three Trees Gammer

Rockn D Ambush 1531

1322

Bon View Gammer 85

Marb	.50
RE	.62
RADG	.28
DMI	.21
\$EN	-6
HP	13.6
\$M	60
\$B	136
\$C	236

CED	BW	Birth	Wean	Yrlg	CEM	Milk	WR	YR
8	85	.7	59	104	6	16	100	100

Here's two of last year's favorite sire group...
Hoover Dam



Reference Sire - Hoover Dam G18



Reference Sire - Musgrave Aviator

37

RM Reserve 2548

Birthdate: 06/01/22
Tattoo: 2548
Reg: 20663577

V A R Reserve 1111

B/R New Day 454

RM Reserve 9804

Blevins Erica 3204

Sandpoint Blackbird 8809

Connealy Final Solution

REM Normanday 2907

Blevins 112 Erica 1510

RM I Trend 7528

REM Duchess 8337

REM Duchess 3325

21AR Blackbird Lady 8037

S A V Mustang 9134

Rem Duchess 2331

Marb	.67
RE	.68
RADG	.21
DMI	.67
\$EN	13
HP	19.6
\$M	88
\$B	132
\$C	259

CED	BW	Birth	Wean	Yrlg	CEM	Milk	WR	YR
13	80	-.8	43	82	9	30	97	104

A Reserve X Baron cross. Calving ease, thickness and great

38

RM Aviator 2503

Birthdate: 05/05/22
Tattoo: 2503
Reg: 20663758

ET

Sitz Upward 307R

Koupals B&B Identity

B&B Erica 605

Musgrave Aviator

MCATL Forever Lady 1429-138

S A V Final Answer 0035

ALC Forever Lady R025

G A R Retail Product

RM Sequel 8535

G G Queen 9361

REM Winny 1338

RM Winny 8302

Rem Big West 2336

REM Win 5316

Marb	.78
RE	.57
RADG	.17
DMI	-.02
\$EN	15
HP	10.0
\$M	78
\$B	129
\$C	245

CED	BW	Birth	Wean	Yrlg	CEM	Milk	WR	YR
10	78	-.6	48	73	12	27	100	100

39

RM Aviator 2505

Birthdate: 05/09/22
Tattoo: 2505
Reg: 20663759

ET

Sitz Upward 307R

Koupals B&B Identity

B&B Erica 605

Musgrave Aviator

MCATL Forever Lady 1429-138

S A V Final Answer 0035

ALC Forever Lady R025

G A R Retail Product

RM Sequel 8535

G G Queen 9361

REM Winny 1338

RM Winny 8302

Rem Big West 2336

REM Win 5316

Marb	.43
RE	.66
RADG	.23
DMI	.43
\$EN	1
HP	11.2
\$M	60
\$B	119
\$C	214

CED	BW	Birth	Wean	Yrlg	CEM	Milk	WR	YR
2	78	.3	51	90	13	25	100	100

Our 1338 cow produced the top selling embryos last year for what she brings to the table. This stellar cow hasn't had a cull calf yet. These 2 bulls may top the sale this year. When you see them, you'll know why.



40th Anniversary Lot

40

RM Dunlop 2705

Birthdate: 06/04/22
Tattoo: 2705
Reg: 20663683

Marb	.52
RE	.60
RADG	.19
DMI	.40
\$EN	14
HP	11.1
\$M	74
\$B	88
\$C	188

Ashley Euler
Dunlouise Cortachy Boy D137
Champagne Cherry Bee B117

RM Dunlop 9609

RM Maverick 530 9912
REM Barbaramere Jet 4346
REM Barbaramere Jet 0375
RM I Trend 7528

REM Natural 1812

MJB Pride 3723

Blevins Queen Solution 9629
S A V Final Answer 0035
Ox Bow Pride 0124
Ox Bow Pride 3144

CED	BW	Birth	Wean	Yrlg	CEM	Milk	WR	YR
11	81	-.5	43	75	14	31	102	108

American Outcross - RM 40th Anniversary 2705

This good Dunlop is by my favorite Natural daughter. She has earned her keep as an 11 year old cow, bred back early AGAIN! He has classic XM traits across the board and ties it together with a 1.26 RMY.



41

RM Reserve 2608

Birthdate: 06/08/22
Tattoo: 2608
Reg: 20663626

B/R New Day 454
Sandpoint Blackbird 8809

RM Reserve 9804

Blevins Erica 3204
Connealy Final Solution
Blevins 112 Erica 1510
Connealy Consensus
Connealy Combination 0188
Black Cayra of Conanga 8127

REM Ella 8377

Cole Creek Black Seal 230
REM Ella 6310
REM Ella 5329

Marb	.67
RE	.36
RADG	.21
DMI	.45
\$EN	-1
HP	17.9
\$M	73
\$B	121
\$C	230

CED	BW	Birth	Wean	Yrlg	CEM	Milk	WR	YR
5	85	1.4	42	79	3	27	102	105

You will like this Reserve bull on sale day. Classic RM EPDS across the board with a high HP. His very gentle high marbling dam is something to talk about as well

42

RM Reserve 2598

Birthdate: 06/08/22
Tattoo: 2598
Reg: 20663617

B/R New Day 454
Sandpoint Blackbird 8809

RM Reserve 9804

Blevins Erica 3204
Connealy Final Solution
Blevins 112 Erica 1510
Connealy Combination 0188

RM Baron 5811

REM Ruby 8372

G G Queen 9361
RM Sequel 8535
Rem Ruby 1331

Marb	.55
RE	.64
RADG	.21
DMI	.02
\$EN	9
HP	15.8
\$M	80
\$B	120
\$C	236

CED	BW	Birth	Wean	Yrlg	CEM	Milk	WR	YR
11	81	-1.7	44	76	7	30	111	102

A good Reserve by a maternal sister to RM Scottsman. A very solid set of performance number and EPDS

43

RM Reserve 2571

Birthdate: 06/05/22
Tattoo: 2571
Reg: 20663595

B/R New Day 454
Sandpoint Blackbird 8809

RM Reserve 9804

Blevins Erica 3204
Connealy Final Solution
Blevins 112 Erica 1510
S A V Final Answer 0035
S A V Mustang 9134
S A V Emblynette 7415

REM Rita 4303

RM Sequel 8535
REM Rita 2355
JVC Rita 6132 880

Marb	.38
RE	.44
RADG	.18
DMI	.23
\$EN	9
HP	16.0
\$M	81
\$B	111
\$C	225

CED	BW	Birth	Wean	Yrlg	CEM	Milk	WR	YR
11	87	.4	41	74	5	34	110	109

This Reserve bull is by an older cow that packs a punch. She is proof, you don't need high performance EPDs to raise good, heavy cattle

44 RM McLendon 2802

Birthdate: 05/16/22
Tattoo: 2802
Reg: 20663689

Ashley Euler
Dunlouse Cortachy Boy D137
Champagne Cherry Bee B117

RM McLendon 9599

RM 2 Trend 3105
REM Everelda Entense 5361
REM Everelda Entense 8351
Connealy Impression

Byergo Big Easy 2601
Byergo Miss Elia 6153

SMB Erica Traveler 0872

B A R Ext Traveler 205
Blevins Erica Traveler 7217
Blevins Erica Enhancer 4327

Marb	.58
RE	.62
RADG	.13
DMI	0.22
\$EN	19
HP	15.6
\$M	78
\$B	95
\$C	201

CED	BW	Birth	Wean	Yrlg	CEM	Milk	WR	YR
10	64	-2.0	40	60	12	21	107	93

Here's a classic McClendon, calving ease, good weaning index, high HP, side by side carcass traits, top 1% for DMI and posts a 1.41 RMY

45 RM Reserve 2805

Birthdate: 05/30/22
Tattoo: 2805
Reg: 20663692

B/R New Day 454
V A R Reserve 1111
Sandpoint Blackbird 8809

RM Reserve 9804

Connealy Final Solution
Blevins Erica 3204
Blevins 112 Erica 1510
Blevins Schurrtop Solution

Blevins Ext Solution 4729
B A R Queen Ext 5005

Blevins Ext Eileen 4729

Blevins Mission 5709
Blevins Mission Eileen 8247
Blevins Retail Eileen 3461

Marb	.65
RE	.89
RADG	.25
DMI	.45
\$EN	-22
HP	14.2
\$M	42
\$B	153
\$C	240

CED	BW	Birth	Wean	Yrlg	CEM	Milk	WR	YR
-1	98	3.6	57	100	7	19	125	113

This bull is by a 13 year old cow that always produces extra thickness in her calves. This bull is no different. He has great performance indexes and carcass EPDs and he is in the top 10 % for DMI

46 RM Hoover Dam 2580

Birthdate: 06/07/22
Tattoo: 2580
Reg: 20666278

S A F Connection
SydGen C C & 7
SydGen Forever Lady 4087

Hoover Dam

TC Gridiron 258
Erica of Ellston C124
Erica of Ellston V65
S A V Final Answer 0035

S A V Mustang 9134
S A V Emblynette 7415

REM Lass 3339

G A R US Premium Beef
REM Lass 7325
REM Lass 5351

Marb	.64
RE	.39
RADG	.22
DMI	-.27
\$EN	3
HP	15.1
\$M	75
\$B	119
\$C	229

CED	BW	Birth	Wean	Yrlg	CEM	Milk	WR	YR
10	88	-.1	48	81	5	29	107	105

This bull is a full brother to one of the favorite flushes last year. We bred his 10 year old dam back to Hoover Dam because it worked so well. He is not a heifer bull, but he will put some pounds on the ground and with his top 1% DMI and his carcass traits, you'll be glad you own him. The incredible daughters you will get are just the icing on the cake

47 RM Scottsman 2572

Birthdate: 06/05/22
Tattoo: 2572
Reg: 20663596

Ashley Euler
Dunlouse Cortachy Boy D137
Champagne Cherry Bee B117

RM Scottsman 9625

RM Sequel 8535
REM Ruby 1341
Rem Ruby 1331
Connealy Consensus

Connealy Combination 0188
Black Cayra of Conanga 8127

REM Blackbird 9343

G G Maverick 530
REM Blackbird 9329
REM Blackbird 5320

Marb	.80
RE	.21
RADG	.16
DMI	.21
\$EN	24
HP	13.7
\$M	77
\$B	100
\$C	207

CED	BW	Birth	Wean	Yrlg	CEM	Milk	WR	YR
8	82	-.8	42	69	9	17	115	108

American Outcross- One of the best Scottsman bulls we will sell, by one of the best cow families we own. A high marbling bull with a 1.25 RMY and he lands in the top 5% for DMI

48 RM Reserve 9649 2812

Birthdate: 06/10/22
Tattoo: 2812
Reg: 20663698

B/R New Day 454
V A R Reserve 1111
Sandpoint Blackbird 8809

RM Reserve 9649

Connealy Combination 0188
REM Eriskay Enhance 6439
MJB Eriskay Enhance 2731
Connealy Consensus

Connealy Combination 0188
Black Cayra of Conanga 8127

SMB Blackcap 8854

Blevins Schurrtop Solution
Blevins Blackcap 9615
Blevins Blackcap Spect 2106

Marb	.63
RE	.54
RADG	.21
DMI	.81
\$EN	3
HP	15.5
\$M	81
\$B	111
\$C	225

CED	BW	Birth	Wean	Yrlg	CEM	Milk	WR	YR
15	78	-.8	56	96	14	24	95	102

Calving ease, over and under performance EPDs, side by side carcass traits and he is out of one of those square, moderate easy fleshing, perfect uddered cows.



49 RM Motive 9503 2809

Birthdate: 06/08/22
Tattoo: 2809
Reg: 20663695

Marb	.58
RE	.51
RADG	.19
DMI	1.12
\$EN	-1
HP	13.8
\$M	80
\$B	123
\$C	240

Soo Line Motive 9016 HF Kodiak 5R
TLA Beauty 5R

RM Motive 9503

REM Erica 9368

RM Maverick 530 9912

SMB Dixie 5869

SMB Dixie 1318

RM I Trend 7528

FV Erica P517

G G Maverick 530

FV Barbaramere Jet T023

RM Maverick 530 9568

REM Dixie 9328

CED	BW	Birth	Wean	Yrlg	CEM	Milk	WR	YR
10	80	-.6	55	96	8	33	112	108

This Motive son has our favorite numbers; over and under for WW and YW and side by side carcass traits and one of the highest RMY in the sale of 1.42

51 RM Cortachy Boy 9508 2621

Birthdate: 06/10/22
Tattoo: 2621
Reg: 20663637

Marb	.52
RE	.44
RADG	.20
DMI	.40
\$EN	7
HP	15.5
\$M	76
\$B	111
\$C	220

Dunlouse Cortachy Boy D137
Champagne Cherry Bee B117

RM Cortachy Boy 9508

REM Lass 1358

V A R Reserve 1111

REM Blackcap 0394

REM Blackcap 3367

Ashley Eular
RM Sequel 8535

A J R Lass 7224

B/R New Day 454

Sandpoint Blackbird 8809

S A V Mustang 9134

SMB Blackcap 1319

CED	BW	Birth	Wean	Yrlg	CEM	Milk	WR	YR
11	75	-1.6	37	75	11	34	107	108

A Cortachy Boy X Reserve cross with calving ease, good performance indexes, high HP, side by side carcass traits and a 1.25 RMY

50 RM 2Trend 8631 2639

Birthdate: 06/14/22
Tattoo: 2639
Reg: 20663648

Marb	.86
RE	.76
RADG	.17
DMI	.36
\$EN	18
HP	11.7
\$M	77
\$B	121
\$C	234

S A V Mustang 9134

RM 2 Trend 3105

RM 2Trend 8631

REM Quality Lady 2333

Byergo Big Easy 2601

REM Queen Peggy 0384

REM Queen Peggy 6449

REM Juice 1314

RM Sequel 8535

RM Quality Lady 8391

Connealy Impression

Byergo Miss Elia 6153

REM Natural 1812

RMV Queen Peggy 4055

CED	BW	Birth	Wean	Yrlg	CEM	Milk	WR	YR
9	77	-.9	45	74	11	22	99	98

This calving ease standout is also the number one bull in the sale for RMY, along with a high \$EN, top 10% DMI and very impressive carcass traits

52 RM Reserve 2540

Birthdate: 05/22/22
Tattoo: 2540
Reg: 20663570

Marb	.85
RE	.95
RADG	.22
DMI	.77
\$EN	1
HP	11.6
\$M	75
\$B	145
\$C	263

V A R Reserve 1111

RM Reserve 9804

Blevins Erica 3204

RM 'S Answer 4528

REM Blackbird 0489

REM Blackbird 6329

B/R New Day 454

Sandpoint Blackbird 8809

Connealy Final Solution

Blevins 1i2 Erica 1510

REM's Answer 2701

REM Falcon 0305

Connealy Combination 0188

REM Blackbird 1346

CED	BW	Birth	Wean	Yrlg	CEM	Milk	WR	YR
9	77	.4	54	96	10	32	106	108

A calving ease Reserve with perfect over and under EPDs, big time carcass EPD and the number seven ranking bull in the sale for RMY of 1.51



53 RM Scottsman 2599

Birthdate: 06/08/22
Tattoo: 2599
Reg: 20663618

Marb	.99
RE	.09
RADG	.18
DMI	.31
\$EN	22
HP	16.9
\$M	82
\$B	117
\$C	234

Dunlouse Cortachy Boy D137
Champagne Cherry Bee B117

RM Scottsman 9625

REM Ruby 1341

V A R Reserve 1111

REM Everelda Entense 9421

REM Everelda Entense 4381

Ashley Eular

RM Sequel 8535

Rem Ruby 1331

B/R New Day 454

Sandpoint Blackbird 8809

RM Maverick 530 9912

FV Everelda Entense P373

CED	BW	Birth	Wean	Yrlg	CEM	Milk	WR	YR
4	83	.8	45	76	6	15	99	111

This square Scottsman is number six in the sale for IMF. The rest of his traits are solid.



56 RM Scottsman 2583

Birthdate: 06/07/22
Tattoo: 2583
Reg: 20663604

Marb	.64
RE	.69
RADG	.2
DMI	.52
\$EN	3
HP	10.5
\$M	59
\$B	122
\$C	217

Dunlouise Cortachy Boy D137
Champagne Cherry Bee B117

RM Scottsman 9625

REM Ruby 1341

RM Sequel 8535

RM Baron 5811

Rem Ruby 1331
Connealy Combination

REM Blackbird 8352

REM Blackbird 4319

G G Queen 9361

REM Natural 1812

Blevins Blackbird 3467

CED	BW	Birth	Wean	Yrlg	CEM	Milk	WR	YR
5	82	-.1	54	93	7	18	114	100

One of the stoutest calving ease bulls we will sell this year along with a low DMI, side by carcass traits and an RMY of 1.38

54 RM McLendon 2541

Birthdate: 05/23/22
Tattoo: 2541
Reg: 20663571

Marb	.39
RE	.48
RADG	.15
DMI	.31
\$EN	3
HP	13.1
\$M	75
\$B	103
\$C	209

Ashley Euler
Dunlouise Cortachy Boy D137
Champagne Cherry Bee B117

RM McLendon 9599

REM Everelda Entense 5361

RM 2 Trend 3105
REM Everelda Entense 8351
Connealy Impression

Byergo Big Easy 2601

REM Dixie 0444

SMB Dixie 7858

Byergo Miss Elia 6153
RM Baron 5811
SMB Dixie 5869

CED	BW	Birth	Wean	Yrlg	CEM	Milk	WR	YR
4	80	.8	56	84	1	26	108	104

A very good McClendon son. Look at his over and under performance EPDS. His other numbers are in the right ranking. Our Big Easy cows are doing a very good job for us and this bull's dam is no exception

55 RM McLendon 2525

Birthdate: 05/15/22
Tattoo: 2525
Reg: 20663561

Marb	.52
RE	.28
RADG	.14
DMI	.14
\$EN	11
HP	11.1
\$M	67
\$B	79
\$C	169

Ashley Euler
Dunlouise Cortachy Boy D137
Champagne Cherry Bee B117

RM McLendon 9599

REM Everelda Entense 5361

RM 2 Trend 3105
REM Everelda Entense 8351
Koupals B&B Identity

Musgrave Aviator

REM Mariah 0325

FV Mariah R134

MCATL Forever Lady 1429-138
Hunts Calculator 2720
FV Mariah 3151

CED	BW	Birth	Wean	Yrlg	CEM	Milk	WR	YR
7	73	-1.0	38	65	7	35	97	100

American Outcross- I noticed how wide this calf was before we weaned. He is an easy calving MAGA (make Angus great again) bull that is in the top 4% for DMI and posts a 1.26 RMY

57 RM Reserve 2630

Birthdate: 06/12/22
Tattoo: 2630
Reg: 20663643

Marb	.41
RE	.36
RADG	.26
DMI	.65
\$EN	-10
HP	14.8
\$M	72
\$B	118
\$C	225

B/R New Day 454
V A R Reserve 1111

RM Reserve 9804

Blevins Erica 3204

Sandpoint Blackbird 8809
Connealy Final Solution

Connealy Combination 0188

REM Blackbird 6312

M J B Blackbird 3709

Blevins 112 Erica 1510
Connealy Consensus
Black Cayra of Conanga 8127

Bon View New Design 878

Jolly R Blackbird 122F

CED	BW	Birth	Wean	Yrlg	CEM	Milk	WR	YR
10	87	.9	60	104	9	28	114	99

Look at the weaning EPD on this bull. He is out of one our smaller cows who just keeps pumping out good progeny

58 RM Scottsman 2569

Birthdate: 06/05/22
Tattoo: 2569
Reg: 20663593

Marb	.66
RE	.69
RADG	.11
DMI	.29
\$EN	16
HP	15.9
\$M	85
\$B	103
\$C	219

Ashley Euler
Dunlouise Cortachy Boy D137
Champagne Cherry Bee B117

RM Scottsman 9625

REM Ruby 1341

RM Sequel 8535

RM Baron 5811

Rem Ruby 1331
Connealy Combination 0188

REM Bear Creek Judy 9396

REM Bear Creek Judy 8354

G G Queen 9361
C R A Bextor 872 5205 608
FV Bear Creek Judy 3221

CED	BW	Birth	Wean	Yrlg	CEM	Milk	WR	YR
1	83	.1	47	69	5	28	107	101

Scottsman X Baron. We like them thick and this bull is bred to push down the scale on a REAL moderate frame. If you liked Traveler 6807, you will be reminiscing about the good old days when you lay eyes on this champ

59 RM Scottsman 2547

Birthdate: 06/01/22
Tattoo: 2547
Reg: 20663576

Marb	.93
RE	.53
RADG	.18
DMI	.83
\$EN	2
HP	10.5
\$M	76
\$B	134
\$C	250

Ashley Euler
Dunlouise Cortachy Boy D137
Champagne Cherry Bee B117

RM Scottsman 9625

REM Ruby 1341

RM Sequel 8535

Rem Ruby 1331
B/R New Day 454

V A R Reserve 1111

Sandpoint Blackbird 8809

REM Annie 9435

REM Annie 3312

REM Natural 1812

REM Annie 0395

CED	BW	Birth	Wean	Yrlg	CEM	Milk	WR	YR
9	78	-.3	51	90	9	25	99	112

Calving ease, over and under performance EPDs and one of the highest IMF bulls selling. Only in this herd can you see performance and carcass traits move in the right direction from the EPD deficit of Cortachy Boy

60 RM Motive 7541 2681

Birthdate: 06/30/22
Tattoo: 2681
Reg: 20663678

Marb	.15
RE	.74
RADG	.24
DMI	.67
\$EN	-20
HP	10.3
\$M	50
\$B	128
\$C	216

HF Kodiak 5R

Soo Line Motive 9016

TLA Beauty 5R

RM Motive 7541

REM Blackbird 5320

Rem Big West 2336

Rem Blackbird 3305

S A V Mustang 9134

RM 2 Trend 3105

REM Juice 1314

REM Everelda Entense 5361

REM Everelda Entense 8351

G G Maverick 530

FV Everelda Entense P373

CED	BW	Birth	Wean	Yrlg	CEM	Milk	WR	YR
1	91	4.2	65	109	9	26	113	112

Look at the indexes here! No surprise when your talking about a bull by RM McClendon and RM FJB's dam. She has produced 7 calves with a stunner bell curve of indexes of BW 94, WW 102, YW 104, IMF 115, RE 113

61 RM Reserve 2550

Birthdate: 06/01/22
Tattoo: 2550
Reg: 20663579

Marb	.66
RE	.76
RADG	.18
DMI	-.27
\$EN	21
HP	17.0
\$M	80
\$B	115
\$C	229

B/R New Day 454

V A R Reserve 1111

Sandpoint Blackbird 8809

RM Reserve 9804

Blevins Erica 3204

Connealy Final Solution

Blevins 112 Erica 1510

Ashley Euler

Dunlouise Cortachy Boy D137

Champagne Cherry Bee B117

REM Ruby 9334

REM Ruby 1341

RM Sequel 8535

Rem Ruby 1331

CED	BW	Birth	Wean	Yrlg	CEM	Milk	WR	YR
6	80	.9	41	67	4	20	104	109

A Reserve X Cortachy Boy, That's a great mating. Calving ease with new outcross blood. High HP, \$EN, top 1% of the breed for DMI; side by side carcass traits and a 1.35 RMY

62 RM Dunlop 2651

Birthdate: 06/20/22
Tattoo: 2651
Reg: 20663656

Marb	.39
RE	.59
RADG	.16
DMI	-.30
\$EN	26
HP	13.0
\$M	72
\$B	82
\$C	178

Ashley Euler
Dunlouise Cortachy Boy D137
Champagne Cherry Bee B117

RM Dunlop 9609

REM Barbaramere Jet 4346

RM Maverick 530 9912

REM Barbaramere Jet 0375

G A R Retail Product

RM Sequel 8535

G G Queen 9361

REM Exts Miss Line Drive 1320

REM Exts Miss Line Drive 835

Talon New Design 1706

H C EXTS Miss Line Drive 995

CED	BW	Birth	Wean	Yrlg	CEM	Milk	WR	YR
7	81	-.5	32	55	10	20	113	95

This good Dunlop is out of a 13 year old cow, bred back, AGAIN. That's the kind we like making. We don't recommend him on heifers. You will have to look past his WW and YW EPDs. Old cows and Cortachy Boys don't make big ones, but they do make cattle that will last.

63 RM Scottsman 2588

Birthdate: 06/07/22
Tattoo: 2588
Reg: 20663608

Marb	.61
RE	.08
RADG	.15
DMI	-.23
\$EN	27
HP	11.2
\$M	71
\$B	92
\$C	190

Ashley Euler

Dunlouise Cortachy Boy D137

Champagne Cherry Bee B117

RM Scottsman 9625

REM Ruby 1341

RM Sequel 8535

Rem Ruby 1331

Connealy Consensus

Connealy Combination 0188

Black Cayra of Conanga 8127

REM Blackbird 8387

REM Blackbird 3344

JVC Pioneer X080

REM Blackbird 1336

CED	BW	Birth	Wean	Yrlg	CEM	Milk	WR	YR
8	79	-.8	35	56	14	13	102	94

This is a very nice calving ease Scottsman; one of the high \$EN bulls in the sale and stands in the top 1% of the breed for DMI



64 RM McLendon 2542

Birthdate: 05/23/22
Tattoo: 2542
Reg: 20663572

Ashley Euler
Dunlouise Cortachy Boy D137
Champagne Cherry Bee B117

RM McLendon 9599

RM 2 Trend 3105
REM Everelda Entense 5361

REM Everelda Entense 8351
B/R New Day 454

V A R Reserve 1111

Sandpoint Blackbird 8809

REM Pride 0336

REM Baron 5811
REM Pride 8407
REM Pride 2349

Marb	.68
RE	.33
RADG	.17
DMI	.06
\$EN	13
HP	15.6
\$M	73
\$B	110
\$C	216

CED	BW	Birth	Wean	Yrlg	CEM	Milk	WR	YR
9	69	-2.0	37	69	3	28	109	101

By the bull that is making our bred heifers, RM McClendon. You get it all here, calving ease, HP, \$EN, DMI, IMF and a RMY of 1.32

65 RM Reserve 2814

Birthdate: 06/13/22
Tattoo: 2814
Reg: 20663701

B/R New Day 454

V A R Reserve 1111

Sandpoint Blackbird 8809

RM Reserve 9804

Blevins Erica 3204

Connealy Final Solution

RM Sequel 8535

Blevins 112 Erica 1510
G A R Retail Product

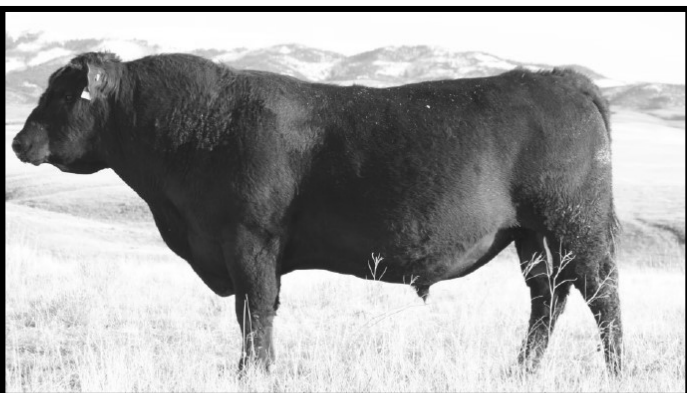
SMB Retail Eriskay 1805

G G Queen 9361
G A R Retail Product
Blevins Retail Eriskay 4317
Blevins Eriskay Queen 2118

Marb	.56
RE	.32
RADG	.23
DMI	.81
\$EN	8
HP	15.7
\$M	82
\$B	126
\$C	245

CED	BW	Birth	Wean	Yrlg	CEM	Milk	WR	YR
4	92	2.5	42	85	6	29	103	111

Here it is again, a big stout Reserve grandson by a 13 year old Sequel daughter. There are several 3/4 brothers bred this same way in this sale. He posts very nice indexes and EPDS. His dam posts 11 calves with an avg IMF index of 105



Reference Sire
RM Sequel 8535

66 RM Reserve 2810

Birthdate: 06/08/22
Tattoo: 2810
Reg: 20663696

B/R New Day 454

V A R Reserve 1111

Sandpoint Blackbird 8809

RM Reserve 9804

Blevins Erica 3204

Connealy Final Solution

RM Sequel 8535

Blevins 112 Erica 1510
G A R Retail Product

SMB Blackbird Direct 1806

LD Redirect 11
Blevins Blackbird Direct 7207
Blevins New Blackbird 5439

Marb	.77
RE	.76
RADG	.24
DMI	.02
\$EN	3
HP	18.7
\$M	81
\$B	135
\$C	256

CED	BW	Birth	Wean	Yrlg	CEM	Milk	WR	YR
8	87	.9	47	81	6	28	107	101

Reserve on Sequel cows has done well here. This one is no exception. Like most of our Sequel cows; they are 12-14 years old, still raising some of our best bulls. This bull has noteworthy numbers and EPDS across the board.

67 RM Reserve 2552

Birthdate: 06/02/22
Tattoo: 2552
Reg: 20663581

B/R New Day 454

V A R Reserve 1111

Sandpoint Blackbird 8809

RM Reserve 9804

Blevins Erica 3204

Connealy Final Solution

RM Sequel 8535

Blevins 112 Erica 1510
G A R Retail Product

REM Lass 1344

J R Indigo 0041
REM Lass 4346

G G Queen 9361

G G Lass 9319

Marb	.67
RE	.29
RADG	.20
DMI	1.04
\$EN	-1
HP	15.7
\$M	79
\$B	112
\$C	224

CED	BW	Birth	Wean	Yrlg	CEM	Milk	WR	YR
10	77	-.3	47	89	11	34	100	109

A good big stout, long bull by a 13 year old Sequel daughter, that has had several sale favorites in the past. She is a very high marbling cow, posting 11 calves at 108 for IMF. This bull is 111 IMF

68 RM Scottsman 2637

Birthdate: 06/14/22
Tattoo: 2637
Reg: 20663646

Ashley Euler
Dunlouise Cortachy Boy D137
Champagne Cherry Bee B117

RM Scottsman 9625

RM Sequel 8535

Rem Ruby 1331

Connealy Combination 0188

REM Blackcap 7384

G G Queen 9361
S A V Bismarck 5682
Riverbend Blackcap Y728
Riverbend Blackcap 659

Marb	.62
RE	.21
RADG	.22
DMI	.12
\$EN	12
HP	9.3
\$M	65
\$B	119
\$C	219

CED	BW	Birth	Wean	Yrlg	CEM	Milk	WR	YR
-2	88	2.8	51	85	4	19	118	103

Here it is again; over and under performance EPDS, good \$EN, by a good Baron daughter

69 RM Reserve 2813

Birthdate: 06/10/22
Tattoo: 2813
Reg: 20663699

Marb	.42
RE	.57
RADG	.25
DMI	.29
\$EN	-5
HP	13.2
\$M	68
\$B	143
\$C	253

V A R Reserve 1111 B/R New Day 454
Sandpoint Blackbird 8809

RM Reserve 9804

Blevins Erica 3204
Connealy Final Solution
Blevins 112 Erica 1510
Connealy Consensus

SMB Bell Sara 8853

Connealy Combination 0188
Black Cayra of Conanga 8127
S A V Mustang 9134
REM Bell Sara 3306
FV Bell Sara T278

CED	BW	Birth	Wean	Yrlg	CEM	Milk	WR	YR
4	84	1.7	54	94	9	26	105	109

Reserve X Combination cross. Both these sires transmit thickness, long hipped cows in a moderate package. They are both top DMI bulls and Reminisce is way ahead of the curve on this trait.



70 RM Baron 8542 2682

Birthdate: 06/30/22
Tattoo: 2682
Reg: 20663679

Marb	.50
RE	.30
RADG	.20
DMI	-.49
\$EN	13
HP	8.7
\$M	77
\$B	108
\$C	217

RM Baron 5811
Connealy Combination 0188
G G Queen 9361

RM Baron 8542

REM Primrose Lady 6335
Connealy Combination 0188
REM Primrose Lady 1363
Connealy Consensus

REM Blackbird 9346

Connealy Combination 0188
Black Cayra of Conanga 8127
G G Maverick 530
REM Blackbird 9329
REM Blackbird 5320

CED	BW	Birth	Wean	Yrlg	CEM	Milk	WR	YR
5	82	-.2	47	73	7	31	108	101

Here is a nice calving bull with high HP and ranks in the top 1% for DMI

72 RM Reserve 2629

Birthdate: 06/12/22
Tattoo: 2629
Reg: 20663642

Marb	.79
RE	.42
RADG	.22
DMI	.14
\$EN	10
HP	17.7
\$M	96
\$B	125
\$C	258

V A R Reserve 1111 B/R New Day 454
Sandpoint Blackbird 8809

RM Reserve 9804

Blevins Erica 3204
Connealy Final Solution
Blevins 112 Erica 1510
Connealy Consensus

REM Blackbird 8399

Connealy Combination 0188
Black Cayra of Conanga 8127
RM I Trend 7528
MJB Blackbird 1727
MJB Blackbird 8730

CED	BW	Birth	Wean	Yrlg	CEM	Milk	WR	YR
10	87	-.3	43	77	9	37	99	106

This thick Reserve bull is by one of our oldest, highest marbling cow families. His numbers sell him on paper. His phenotype will sell himself on sale day

71 RM Reserve 2568

Birthdate: 06/05/22
Tattoo: 2568
Reg: 20663592

Marb	.64
RE	.62
RADG	.19
DMI	.13
\$EN	12
HP	14.6
\$M	83
\$B	100
\$C	213

V A R Reserve 1111 B/R New Day 454
Sandpoint Blackbird 8809

RM Reserve 9804

Blevins Erica 3204
Connealy Final Solution
Blevins 112 Erica 1510
B/R New Day 454

REM Blackcap Prfm 9384

V A R Reserve 1111 Sandpoint Blackbird 8809
Cole Creek Black Seal 230
REM Blackcap Prfm 5309
REM Blackcap Prfm 2346

CED	BW	Birth	Wean	Yrlg	CEM	Milk	WR	YR
14	75	-1.5	47	77	8	30	99	94

This one's easy to spot. With numbers like this he will make several lists

73 RM Reserve 2585

Birthdate: 06/07/22
Tattoo: 2585
Reg: 20663605

Marb	.56
RE	.37
RADG	.20
DMI	-.08
\$EN	17
HP	20.6
\$M	106
\$B	107
\$C	245

V A R Reserve 1111 B/R New Day 454
Sandpoint Blackbird 8809

RM Reserve 9804

Blevins Erica 3204
Connealy Final Solution
Blevins 112 Erica 1510
Connealy Combination 0188

REM Ruby 8349

RM Baron 5811
G G Queen 9361
RM Sequel 8535
REM Ruby 1341
Rem Ruby 1331

CED	BW	Birth	Wean	Yrlg	CEM	Milk	WR	YR
9	87	.6	48	79	13	26	103	98

Here is another great bull by this great Baron daughter. She has had several chart toppers in our sales. He is one of the highest HP, \$EN and DMI bulls in the breed. His stature will be well liked on sale day too.



76 RM Scottsman 2207

Birthdate: 06/10/22
Tattoo: 2207
Reg: 20663553

Ashley Euler
Dunlouse Cortachy Boy D137
Champagne Cherry Bee B117

RM Scottsman 9625

REM Ruby 1341

RM Sequel 8535

Sitz Upside 547W

Rem Ruby 1331
Sitz Upward 307R

BLEVINS ERISKAY Upside 5605

Blevins Prime Solution 8609
Blevins Prime Eriskay 3245
Blevins Ambush Eriskay 8092

Marb	.57
RE	.16
RADG	.14
DMI	-.18
\$EN	22
HP	11.2
\$M	66
\$B	92
\$C	185

CED	BW	Birth	Wean	Yrlg	CEM	Milk	WR	YR
-2	86	2.0	34	56	4	21	97	103

American Outcross- This is a good looking Scottsman by one of our sweetheart, gentle cows. He is one of the highest \$EN bulls in the sale and ranks in the top 1% for feed efficiency (DMI), AND he is much better than his EPDs. Don't look past him.

74 RM Dunlop 2549

Birthdate: 06/01/22
Tattoo: 2549
Reg: 20663578

Ashley Euler
Dunlouse Cortachy Boy D137
Champagne Cherry Bee B117

RM Dunlop 9609

REM Barbaramere Jet 4346
RM Maverick 530 9912

REM Barbaramere Jet 0375
Connealy Combination 0188

RM Baron 5811

G G Queen 9361

REM Duchess 8312

REM Duchess 6342
REM Natural 1812
REM Duchess 2331

Marb	.57
RE	.87
RADG	.24
DMI	.46
\$EN	-11
HP	19.8
\$M	91
\$B	144
\$C	278

CED	BW	Birth	Wean	Yrlg	CEM	Milk	WR	YR
4	84	1.5	62	105	9	33	109	95

A big performing Dunlop bull with a 62 WW EPD, high HP, top 1% for DMI, great carcass EPDS and a 1.47 RMY

77 RM Reserve 2603

Birthdate: 06/19/22
Tattoo: 2603
Reg: 20663621

B/R New Day 454
V A R Reserve 1111

RM Reserve 9804

Blevins Erica 3204

Sandpoint Blackbird 8809

Connealy Final Solution

RM Sequel 8535

Blevins 112 Erica 1510
G A R Retail Product

REM Primrose 1306

REM Primrose 8353

G G Queen 9361

G G Maverick 530

FV Primrose S314

Marb	.66
RE	.45
RADG	.19
DMI	.35
\$EN	9
HP	17.8
\$M	86
\$B	104
\$C	221

CED	BW	Birth	Wean	Yrlg	CEM	Milk	WR	YR
15	74	-1.7	41	74	11	29	97	101

Here's another chance at longevity. This bull's 13 year old dam is bred back and so are her daughters. This is a great calving ease bull with a high HP, top 10% DMI and solid carcass traits

75 RM 2Trend 8631 2627

Birthdate: 06/12/22
Tattoo: 2627
Reg: 20663641

S A V Mustang 9134
RM 2 Trend 3105

RM 2Trend 8631

REM Quality Lady 2333

REM Juice 1314

RM Sequel 8535

RM Quality Lady 8391

RM 'S Answer 4528

RM Debonaire 7572

REM Lass 5306

REM Cassie 0388

REM Cassie 8304
REM Natural 1812
REM Cassie 6375

Marb	.8
RE	.66
RADG	.28
DMI	.27
\$EN	-17
HP	15.8
\$M	49
\$B	147
\$C	240

CED	BW	Birth	Wean	Yrlg	CEM	Milk	WR	YR
1	80	3.4	53	100	12	22	95	95

This bull can be traced back to JR Juice five times and his IMF EPD shows it. He also posts a 1.40 RMY. We like this pedigree for feet, udder, disposition and marbling, but maybe what is most notable is that he ranks in the top 35% for RADG and the top 10% of the breed for DMI.

78 RM Scottsman 2612

Birthdate: 06/09/22
Tattoo: 2612
Reg: 20663629

Ashley Euler
Dunlouse Cortachy Boy D137
Champagne Cherry Bee B117

RM Scottsman 9625

REM Ruby 1341

RM Sequel 8535

Rem Ruby 1331

RM Back To The Future 8502

BAR Back to Future 8502

BAR Miss BAR PP1 RB19

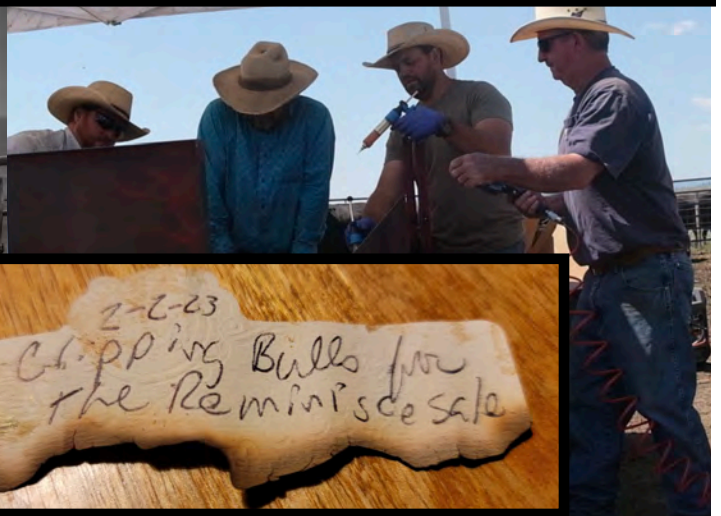
REM Miss Shoshone 3315

FV Miss Shoshone R401
Bon View New Design 1407
Fairview Miss Shoshone 3423

Marb	.76
RE	.47
RADG	.13
DMI	.40
\$EN	21
HP	13.7
\$M	69
\$B	111
\$C	213

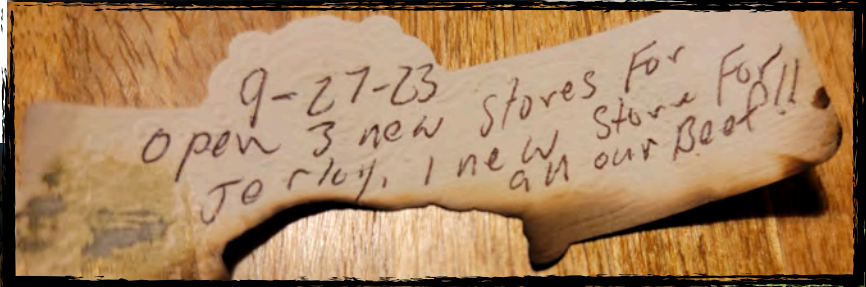
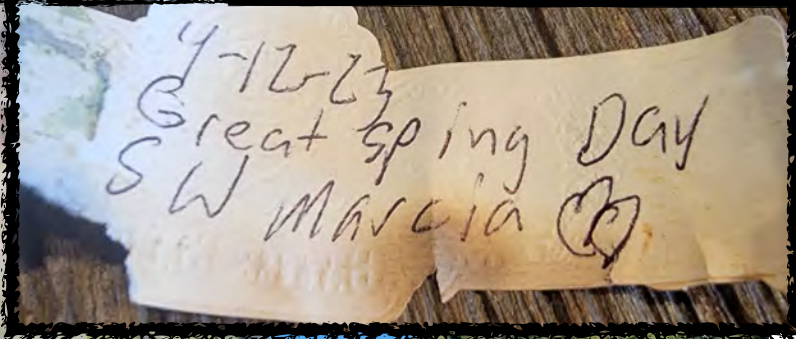
CED	BW	Birth	Wean	Yrlg	CEM	Milk	WR	YR
5	86	.2	35	58	9	18	106	102

A good Scottsman by another tried and true 11 year old cow. Good HP, \$EN, DMI, carcass EPDs and a 1.34 RMY



2-2-23
Chipping Bulls for
the Reminiscence sale





79 RM Reserve 2573

Birthdate: 06/05/22
Tattoo: 2573
Reg: 20663597

Marb	.58
RE	.46
RADG	.19
DMI	.51
\$EN	7
HP	19.1
\$M	83
\$B	117
\$C	235

V A R Reserve 1111 B/R New Day 454
Sandpoint Blackbird 8809

RM Reserve 9804

Blevins Erica 3204
Connealy Final Solution
Blevins 112 Erica 1510
G A R Retail Product

RM Sequel 8535

REM Blackbird 2324

G G Queen 9361
Rem Big West 2336
REM Blackbird 6331
Rem Blackbird 3305

CED	BW	Birth	Wean	Yrlg	CEM	Milk	WR	YR
9	88	-.3	42	79	6	28	104	104

Another Reserve by a 12 year old Sequel daughter with high HP, +\$EN, top 15% for DMI and side by side carcass EPDs

81 RM Cortachy Boy 9501 2523

Birthdate: 05/15/22
Tattoo: 2523
Reg: 20663559

Marb	.31
RE	.46
RADG	.21
DMI	.02
\$EN	20
HP	14.2
\$M	72
\$B	96
\$C	197

Dunlouse Cortachy Boy D137
Ashley Eular
Champagne Cherry Bee B117

RM Cortachy Boy 9501

RM 2 Trend 3105
REM Miss Shoshone 7354
MJB Miss Shoshone 1722
B/R New Day 454

V A R Reserve 1111

REM Blackbird 0368

Sandpoint Blackbird 8809
JVC Pioneer X080
REM Blackbird 3344
REM Blackbird 1336

CED	BW	Birth	Wean	Yrlg	CEM	Milk	WR	YR
4	75	1.7	43	78	10	17	89	107

This is one of the thickest bred bulls we will sell. He is one solid, moderate bull with a 1.25 RMY

80 RM Reserve 2596

Birthdate: 06/08/22
Tattoo: 2596
Reg: 20663615

Marb	.55
RE	.78
RADG	.26
DMI	.43
\$EN	-9
HP	19.6
\$M	75
\$B	136
\$C	251

V A R Reserve 1111 B/R New Day 454
Sandpoint Blackbird 8809

RM Reserve 9804

Blevins Erica 3204
Connealy Final Solution
Blevins 112 Erica 1510
Connealy Consensus

Connealy Combination 0188
Black Cayra of Conanga 8127

REM Primrose 8303

REM Bismarck 2806
REM Primrose 6404
REM Primrose 8353

CED	BW	Birth	Wean	Yrlg	CEM	Milk	WR	YR
13	80	-1.5	48	92	11	25	97	106

Another Reserve X Combination bull with all the right numbers from calving ease to his 1.40 RMY and you will have him picked when you see him, before you see his lot tag

82 RM Reserve 2605

Birthdate: 06/08/22
Tattoo: 2605
Reg: 20663623

Marb	.44
RE	.52
RADG	.18
DMI	-.17
\$EN	11
HP	16.1
\$M	82
\$B	110
\$C	225

V A R Reserve 1111 B/R New Day 454
Sandpoint Blackbird 8809

RM Reserve 9804

Blevins Erica 3204
Connealy Final Solution
Blevins 112 Erica 1510
Connealy Consensus

Connealy Combination 0188
Black Cayra of Conanga 8127

REM Queen 7304

S A V Mustang 9134
REM Queen 5404
G G Queen 9361

CED	BW	Birth	Wean	Yrlg	CEM	Milk	WR	YR
16	77	-2.9	38	67	14	34	99	92

A sure shot calving ease bull by one of our smallest cows. He will moderate your herd while delivering REAL value in other traits like HP, \$EN, DMI, side by side carcass EPDS.



83 RM Dunlop 2606

Birthdate: 06/08/22
Tattoo: 2606
Reg: 20663624

Marb	.70
RE	.47
RADG	.14
DMI	-.18
\$EN	19
HP	9.5
\$M	49
\$B	88
\$C	163

Dunlouse Cortachy Boy D137
Ashley Eular
Champagne Cherry Bee B117

RM Dunlop 9609

RM Maverick 530 9912
REM Barbaramere Jet 4346
REM Barbaramere Jet 0375

REM Natural 1812

RM I Trend 7528
Blevins Queen Solution 9629

REM Annie 3312

G G Maverick 530
REM Annie 0395
REM Annie 4308

CED	BW	Birth	Wean	Yrlg	CEM	Milk	WR	YR
8	86	-.6	36	57	13	24	97	103

You wouldn't guess this bull to be a Cortachy Boy. That's because his 11 year old dam always has good, big long calves. If you can buy a good indexing bull with low DMI and side by side carcass EPDS, you'll be leading the industry "Back to the Future!"

84 RM Reserve 2527

Birthdate: 05/16/22
Tattoo: 2527
Reg: 20663563

Marb	.70
RE	.95
RADG	.26
DMI	.66
\$EN	-12
HP	21.4
\$M	72
\$B	154
\$C	272

V A R Reserve 1111 B/R New Day 454
Sandpoint Blackbird 8809

RM Reserve 9804

Blevins Erica 3204
Connealy Final Solution
Blevins 112 Erica 1510
Connealy Combination 0188

RM Combination 7201
REM Barabaramere 4222

REM Dixie 0494

SMB Dixie 5869
RM Maverick 530 9912
SMB Dixie 1318

CED	BW	Birth	Wean	Yrlg	CEM	Milk	WR	YR
12	68	-1.7	49	94	10	40	98	107

A Reserve X Combination calving ease standout with perfect performance EPDS, one of the highest HP bulls in the breed, top 20% DMI, great carcass EPDS and a 1.35 RMY



85 RM Dunlop 2576

Birthdate: 06/06/22
Tattoo: 2576
Reg: 20663599

Marb	.86
RE	.54
RADG	.16
DMI	-.22
\$EN	18
HP	10.1
\$M	64
\$B	96
\$C	189

Ashley Euler
Dunlouise Cortachy Boy D137
Champagne Cherry Bee B117

RM Dunlop 9609

RM Maverick 530 9912
REM Barabaramere Jet 4346
REM Barabaramere Jet 0375
Connealy Combination 0188

RM Baron 5811
G G Queen 9361

REM Barabaramere Jet 8360

RMV Barabaramere Jet 6003
RM 2 Trend 3105
FV Barabaramere Jet T023

CED	BW	Birth	Wean	Yrlg	CEM	Milk	WR	YR
13	80	-3.2	32	58	15	27	87	94

American Outcross- Real calving ease here with top \$EN, top 1% for DMI, great carcass EPDS and a 1.45 RMY

87 RM Reserve 9649 2674

Birthdate: 06/28/22
Tattoo: 2674
Reg: 20663673

Marb	.50
RE	.36
RADG	.24
DMI	1.03
\$EN	-10
HP	11.5
\$M	60
\$B	109
\$C	201

B/R New Day 454
V A R Reserve 1111 Sandpoint Blackbird 8809

RM Reserve 9649

Connealy Combination 0188
REM Eriskay Enhance 6439
MJB Eriskay Enhance 2731
Redland Game Day 373

Redland Game Game 325
Redland Eppionia 306

REM Della 8457

RM Sequel 8535
MJB Della 1725
RTAR Della 3934

CED	BW	Birth	Wean	Yrlg	CEM	Milk	WR	YR
12	83	0	58	108	9	22	103	101

You'll like the performance of this heifer bull. His dam is a good, moderate square cow with a great udder.

86 RM Scottsman 2559

Birthdate: 06/03/22
Tattoo: 2559
Reg: 20663585

Marb	.79
RE	.33
RADG	.13
DMI	.19
\$EN	13
HP	17.7
\$M	81
\$B	92
\$C	200

Ashley Euler
Dunlouise Cortachy Boy D137
Champagne Cherry Bee B117

RM Scottsman 9625

RM Sequel 8535
REM Ruby 1341
Rem Ruby 1331
RM I Trend 7528

REM Normanday 2907
21AR Blackbird Lady 8037

REM Miss Baranda 8336

REM Natural 1812
REM Miss Baranda 3321
REM Miss Baranda 1371

CED	BW	Birth	Wean	Yrlg	CEM	Milk	WR	YR
3	82	-.1	43	66	10	26	97	101

A double bred calving ease bull by RM Scottsman, who the industry is about to get well acquainted with, after this set of bulls sell. This bull also brings HP, \$EN, top 5% DMI, high IMF and a RMY of 1.34

88 RM Cortachy Boy 9501 2614

Birthdate: 06/09/22
Tattoo: 2614
Reg: 20663631

Marb	.35
RE	.74
RADG	.17
DMI	.50
\$EN	2
HP	12.0
\$M	54
\$B	107
\$C	193

Ashley Euler
Dunlouise Cortachy Boy D137
Champagne Cherry Bee B117

RM Cortachy Boy 9501

RM 2 Trend 3105
REM Miss Shoshone 7354
MJB Miss Shoshone 1722
Connealy Combination 0188

RM Baron 5811
G G Queen 9361

REM Mariah 8333

REM Natural 1812
RMK Mariah 5003
FV Mariah T311

CED	BW	Birth	Wean	Yrlg	CEM	Milk	WR	YR
-3	87	3.2	59	94	5	16	104	107

Cortachy Boy X Baron. That's how you make them thick! Another over and under performance bull with positive \$EN, top 15% DMI with a big ribeye and a RMY of 1.45

89 RM Scottsman 2916

Birthdate: 06/06/22
Tattoo: 2916
Reg: 20663709

Ashley Euler
Dunlouise Cortachy Boy D137
Champagne Cherry Bee B117

RM Scottsman 9625

REM Ruby 1341

RM Sequel 8535

Rem Ruby 1331

Connealy Combination 0188

RM Baron 5811

G G Queen 9361

RMV Black Magic 8001

REM Natural 1812

RMK Black Magic 5004
REM Black Magic 0050

Marb	.43
RE	.54
RADG	.13
DMI	.21
\$EN	23
HP	17.0
\$M	84
\$B	87
\$C	197

CED	BW	Birth	Wean	Yrlg	CEM	Milk	WR	YR
2	86	1.8	42	65	7	18	94	100

American Outcross- Here is another Scottsman by a Baron cow. He has top EPDS for HP, \$EN, DMI and side by side carcass EPDS.

90 RM 2Trend 8631 2625

Birthdate: 06/12/22
Tattoo: 2625
Reg: 20663639

S A V Mustang 9134

RM 2 Trend 3105

REM Juice 1314

RM 2Trend 8631

REM Quality Lady 2333

RM Sequel 8535

RM Quality Lady 8391

B/R New Day 454

V A R Reserve 1111

Sandpoint Blackbird 8809

REM Pride 0386

REM Pride 3723

Connealy Combination 0188

MJB Pride 3723

Marb	.77
RE	.51
RADG	.23
DMI	.97
\$EN	-8
HP	15.0
\$M	72
\$B	138
\$C	251

CED	BW	Birth	Wean	Yrlg	CEM	Milk	WR	YR
3	86	1.8	50	96	3	45	112	110

This bull does it all across the board. There are a lot of Reminisce cows we brag about in this bull's pedigree.

91 RM Scottsman 2551

Birthdate: 06/01/22
Tattoo: 2551
Reg: 20663580

Ashley Euler
Dunlouise Cortachy Boy D137
Champagne Cherry Bee B117

RM Scottsman 9625

REM Ruby 1341

RM Sequel 8535

Rem Ruby 1331

S A V Final Answer 0035

REM's Answer 2701

Ox Bow Beebe Queen 0146

REM Bonny 7453

REM Natural 1812

REM Bonny 3332

Rem Bonny 1321

Marb	.70
RE	.19
RADG	.11
DMI	-.14
\$EN	20
HP	15.5
\$M	86
\$B	95
\$C	209

CED	BW	Birth	Wean	Yrlg	CEM	Milk	WR	YR
5	83	-.1	44	58	8	22	99	91

Here's a double bred calving ease standout by Scottsman. If you need a calving ease cowmaker, mark him down and buy him. High HP and \$EN make'em last

92 RM Big Easy 0601 2539

Birthdate: 05/15/22
Tattoo: 2539
Reg: 20663569

Connealy Impression

Byergo Big Easy 2601

Byergo Miss Elia 6153

RM Big Easy 0601

REM Blackbird 6303

Cole Creek Black Seal 230

M J B Blackbird 3709

Te Mania Berkley B1

Te Mania Emperor E343

Te Mania Lowan Z74

REM Barbaramere Jet 0343

REM I Trend 7528

REM Barbaramere Jet 0375
FV Barbaramere Jet T023

Marb	.87
RE	.42
RADG	.24
DMI	.18
\$EN	-11
HP	16.2
\$M	73
\$B	135
\$C	248

CED	BW	Birth	Wean	Yrlg	CEM	Milk	WR	YR
4	80	3.6	57	97	6	29	117	102

This Big Easy bred bull has a lot of volume, which is why he indexed so well. High HP and low DMI is a good combination. We will continue to use Big Easy blood through RM FJB 0585. The Big Easy daughters have a lot of volume, good dispositions and very nice udders.

93 RM Motive 7541 2657

Birthdate: 06/24/22
Tattoo: 2657
Reg: 20663659

HF Kodiak 5R

Soo Line Motive 9016

TLA Beauty 5R

RM Motive 7541

REM Blackbird 5320

Rem Big West 2336

Rem Blackbird 3305

Connealy Combination 0188

Connealy Consensus

Black Cayra of Conanga 8127

REM Lass 8342

REM Lass 5402

Cole Creek Black Seal 230

A J R Lass 7224

Marb	.44
RE	.47
RADG	.20
DMI	-.46
\$EN	-3
HP	8.6
\$M	67
\$B	108
\$C	207

CED	BW	Birth	Wean	Yrlg	CEM	Milk	WR	YR
5	78	1.4	56	82	8	30	108	102

Here's a good performance Motive son who is in the top 1% of the breed for DMI. That is a money making combination. You also get side by side carcass EPDS and a 1.35 RMY





96 RM Reserve 2623

Birthdate: 06/11/22
Tattoo: 2623
Reg: 20663638

V A R Reserve 1111

RM Reserve 9804

Blevins Erica 3204

RM 'S Answer 4528

REM Winny 7388

REM Winny 4314

B/R New Day 454

Sandpoint Blackbird 8809

Connealy Final Solution

Blevins 112 Erica 1510

REM's Answer 2701

REM Falcon 0305

REM Precision 1547

REM Winny 1338

Marb	.64
RE	.61
RADG	.20
DMI	.05
\$EN	-1
HP	19.8
\$M	82
\$B	129
\$C	249

CED	BW	Birth	Wean	Yrlg	CEM	Milk	WR	YR
12	90	.7	42	75	8	28	100	101

You can't neglect 100 plus performance indexes, high HP, top 4% DMI, side by side carcass EPDS and a 1.38 RMY

94 RM McLendon 2522

Birthdate: 05/13/22
Tattoo: 2522
Reg: 20663558

Ashley Euler
Dunlouise Cortachy Boy D137
Champagne Cherry Bee B117

RM McLendon 9599

REM Everelda Entense 5361

RM 2 Trend 3105

REM Everelda Entense 8351

B/R New Day 454

V A R Reserve 1111

REM Lass 0381

REM Lass 4315

Sandpoint Blackbird 8809

S A V Mustang 9134

REM Lass 2336

Marb	.49
RE	.32
RADG	.16
DMI	.29
\$EN	14
HP	14.1
\$M	68
\$B	82
\$C	174

CED	BW	Birth	Wean	Yrlg	CEM	Milk	WR	YR
17	68	-3.1	31	60	12	28	99	89

One of my favorite cows and one of my favorite bulls represented here in this sure shot calving ease McClendon son. He is the "XM" type (extreme middle) of excellence

97 RM Dunlop 2597

Birthdate: 06/08/22
Tattoo: 2597
Reg: 20663616

Ashley Euler
Dunlouise Cortachy Boy D137
Champagne Cherry Bee B117

RM Dunlop 9609

REM Barabaramere Jet 4346

RM Maverick 530 9912

REM Barabaramere Jet 0375

REM's Answer 2701

RM 'S Answer 4528

REM Daisey Solution 8459

SMB Daisey Solution 4853

REM Falcon 0305

RM Maverick 530 9912

Blevins Daisey Solution 6277

Marb	.37
RE	.53
RADG	.11
DMI	.34
\$EN	17
HP	9.4
\$M	65
\$B	95
\$C	188

CED	BW	Birth	Wean	Yrlg	CEM	Milk	WR	YR
5	81	1.3	49	72	10	12	101	89

Just another long, wide, deep Dunlop with top rankings in the right categories

95 RM Cortachy Boy 9641 2647

Birthdate: 06/19/22
Tattoo: 2647
Reg: 20663652

Ashley Euler
Dunlouise Cortachy Boy D137
Champagne Cherry Bee B117

RM Cortachy Boy 9641

REM Winny 1338

RM Sequel 8535

REM Winny 1338

RM Winny 8302

Connealy Combination 0188

RM Baron 5811

G G Queen 9361

REM Everelda 7442

REM Everelda 5380

REM Natural 1812

Ox Bow Everelda 024

Marb	.63
RE	.16
RADG	.16
DMI	.06
\$EN	12
HP	10.5
\$M	62
\$B	80
\$C	166

CED	BW	Birth	Wean	Yrlg	CEM	Milk	WR	YR
4	86	.5	43	68	5	25	103	101

This is a maternal brother to last year's top selling bull, bought buy Cactus Cattle Co in Plevna, MT. This bull's sire is a son of our great RM 1338 Sequel daughter. Now let's get to his own RM Baron dam. She is making a reputation for herself by making VERY thick, moderate bulls.

98 RM Motive 9503 2818

Birthdate: 06/29/22
Tattoo: 2818
Reg: 20663704

HF Kodiak 5R
Soo Line Motive 9016

RM Motive 9503

REM Erica 9368

TLA Beauty 5R

RM I Trend 7528

REM Erica 9368

FV Erica P517

Connealy Consensus

Connealy Combination 0188

Black Cayra of Conanga 8127

SMB Barabaramere 7856

REM Barabaramere 7314

Isu Imaging Q 9111

REM Barabaramere 5305

Marb	.65
RE	.53
RADG	.25
DMI	.71
\$EN	3
HP	7.4
\$M	67
\$B	138
\$C	246

CED	BW	Birth	Wean	Yrlg	CEM	Milk	WR	YR
14	84	-2.2	54	101	9	28	95	95

Good spread here on this calving ease Motive who comes from our largest cow family, which is also our highest marbling cow family. Great feed efficiency in this bull and side by side carcass EPDS.

99 RM Scottsman 2586

Birthdate: 06/07/22
Tattoo: 2586
Reg: 20663606

Marb	.55
RE	.32
RADG	.14
DMI	.13
\$EN	17
HP	11.6
\$M	71
\$B	112
\$C	216

Ashley Euler
Dunlouise Cortachy Boy D137
Champagne Cherry Bee B117

RM Scottsman 9625

REM Ruby 1341

V A R Reserve 1111

REM Chris 9311

REM Chris 7404

RM Sequel 8535

Rem Ruby 1331
B/R New Day 454

Sandpoint Blackbird 8809

RM 'S Answer 4528

REM Chris 4306

CED	BW	Birth	Wean	Yrlg	CEM	Milk	WR	YR
8	75	-1.2	37	61	6	24	100	98

If you liked Traveler 6807, this bull will be on your list. That is what Scottsman's are all like. Moderate, deep and wide. This calving ease brick posts high \$EN and feed efficiency (DMI)

101 RM Cortachy Boy 9501 2535

Birthdate: 05/19/22
Tattoo: 2535
Reg: 20663568

Marb	.55
RE	.35
RADG	.21
DMI	.35
\$EN	-8
HP	13.7
\$M	54
\$B	112
\$C	199

Ashley Euler
Dunlouise Cortachy Boy D137
Champagne Cherry Bee B117

RM Cortachy Boy 9501

REM Miss Shoshone 7354

MJB Miss Shoshone 1722
Connealy Impression

Byergo Big Easy 2601

REM Everelda Entense 0396

RM Maverick 530 9912

REM Everelda Entense 4381
FV Everelda Entense P373

CED	BW	Birth	Wean	Yrlg	CEM	Milk	WR	YR
4	87	2.6	56	94	8	14	93	102

Here are some big performance EPDS for a Cortachy Boy by a very nice looking Big Easy daughter.

100 RM Dunlop 2658

Birthdate: 06/24/22
Tattoo: 2658
Reg: 20663660

Marb	.65
RE	.48
RADG	.21
DMI	-.32
\$EN	16
HP	14.6
\$M	72
\$B	110
\$C	215

Ashley Euler
Dunlouise Cortachy Boy D137
Champagne Cherry Bee B117

RM Dunlop 9609

REM Barbaramere Jet 4346

RM Black Seal 5515

REM Daisey Solution 7440

SMB Daisey Solution 4853

RM Maverick 530 9912

REM Barbaramere Jet 0375
Cole Creek Black Seal 230

REM Erica 9368

RM Maverick 530 9912

Blevins Daisey Solution 6277

CED	BW	Birth	Wean	Yrlg	CEM	Milk	WR	YR
12	78	-1.9	37	67	11	21	89	95

Calving ease, HP, \$EN, top 1% feed efficiency, side by side carcass EPDS and a 1.49 RMY

102 RM Motive 7541 2819

Birthdate: 06/30/22
Tattoo: 2819
Reg: 20663705

Marb	.37
RE	.46
RADG	.21
DMI	.11
\$EN	-2
HP	10.3
\$M	57
\$B	121
\$C	214

HF Kodiak 5R

Soo Line Motive 9016

RM Motive 7541

REM Blackbird 5320

RM 2 Trend 3105

SMB Blackcap 6857

REM Blackcap 9376

TLA Beauty 5R

Rem Big West 2336

Rem Blackbird 3305
S A V Mustang 9134

REM Juice 1314

GG Maverick 5171

FV Blackcap 8012

CED	BW	Birth	Wean	Yrlg	CEM	Milk	WR	YR
8	86	-.2	43	77	12	28	104	105

Here's a good, big indexing cow bull who ranks in the top 3% for DMI and posts a 1.26 RMY

103 RM 2Trend 8631 2808

Birthdate: 06/08/22
Tattoo: 2808
Reg: 20663694

Marb	.74
RE	.59
RADG	.16
DMI	.51
\$EN	14
HP	12.8
\$M	84
\$B	113
\$C	231

S A V Mustang 9134

RM 2 Trend 3105

RM 2Trend 8631

REM Quality Lady 2333

Byergo Big Easy 2601

SMB Ruby of Tiffany 0876

JVC Ruby of Tiffany A346

REM Juice 1314

RM Sequel 8535

RM Quality Lady 8391
Connealy Impression

Byergo Miss Elia 6153

B/R New Day 454

T B A Ruby of Tiffany 9011

CED	BW	Birth	Wean	Yrlg	CEM	Milk	WR	YR
9	77	.5	47	80	11	33	89	100

This good RM 8631 is by a dynamite Big Easy daughter, who's dam has another great bull in this sale. There is real longevity here and the ability to produce predictable cattle



104 RM McLendon 2531

Birthdate: 05/19/22
Tattoo: 2531
Reg: 20663565

Ashley Euler
Dunlouise Cortachy Boy D137
Champagne Cherry Bee B117

RM McLendon 9599

RM 2 Trend 3105
REM Everelda Entense 5361
REM Everelda Entense 8351
B/R New Day 454

V A R Reserve 1111

REM Duchess Design 0431

Sandpoint Blackbird 8809
Cole Creek Black Seal 230
REM Duchess Design 5384
Blevins Duchess Design 5455

Marb	.36
RE	.23
RADG	.18
DMI	-.69
\$EN	21
HP	13.8
\$M	67
\$B	90
\$C	184

CED	BW	Birth	Wean	Yrlg	CEM	Milk	WR	YR
12	81	-.3	28	51	2	23	96	100

A sure shot calving ease, **American Outcross** bull, by RM McClendon. He is a high HP, \$EN, top 1% for feed efficiency (DMI) and a 1.34 RMY



105 RM Reserve 2561

Birthdate: 06/03/22
Tattoo: 2561
Reg: 20663587

B/R New Day 454
V A R Reserve 1111
Sandpoint Blackbird 8809

RM Reserve 9804

Connealy Final Solution
Blevins Erica 3204
Blevins 112 Erica 1510
RM I Trend 7528

REM Normanday 2907

REM Duchess 8338

21AR Blackbird Lady 8037
REM Precision 1547
REM Duchess 4301
REM Duchess 2331

Marb	.70
RE	.76
RADG	.19
DMI	.43
\$EN	10
HP	19.4
\$M	85
\$B	121
\$C	242

CED	BW	Birth	Wean	Yrlg	CEM	Milk	WR	YR
12	83	-.4	42	76	12	20	87	93

This bull stands out in the crowd and when you add in his calving ease, HP, \$EN, DMI and side by side carcass traits; it's a bull you can be proud of

107 RM Reserve 2554

Birthdate: 06/02/22
Tattoo: 2554
Reg: 20663582

B/R New Day 454
V A R Reserve 1111
Sandpoint Blackbird 8809

RM Reserve 9804

Connealy Final Solution
Blevins Erica 3204
Blevins 112 Erica 1510
S A V Mustang 9134

RM 2 Trend 3105

REM Blackcap Beauty 7319

REM Juice 1314
REM Mustang 3902
REM Blackcap Beauty 5421
Blevins Blackcap Beauty 2438

Marb	.42
RE	.94
RADG	.24
DMI	.68
\$EN	-14
HP	8.3
\$M	49
\$B	130
\$C	218

CED	BW	Birth	Wean	Yrlg	CEM	Milk	WR	YR
9	86	1.7	55	98	10	24	104	100

Another over and under performance EPD bull with a lot of ribeye, posting a 1.20 RMY. He will be marked by everyone on sale day.

106 RM Scottsman 2577

Birthdate: 06/06/22
Tattoo: 2577
Reg: 20663600

Ashley Euler
Dunlouise Cortachy Boy D137
Champagne Cherry Bee B117

RM Scottsman 9625

RM Sequel 8535
REM Ruby 1341
Rem Ruby 1331
S A V Pioneer 7301

JVC Pioneer X080

REM Exts Miss Line Drive 4316

Basin Lucy 5278
Talon New Design 1706
REM Exts Miss Line Drive 835
H C EXTS Miss Line Drive 995

Marb	.45
RE	.41
RADG	.21
DMI	.48
\$EN	-5
HP	11.8
\$M	56
\$B	102
\$C	188

CED	BW	Birth	Wean	Yrlg	CEM	Milk	WR	YR
1	88	1.5	57	96	11	18	99	100

American Outcross- This Scottsman is by a good solid 10 year old cow. Look at his over and under performance traits. He ranks in the top 10% for feed efficiency and has side by side carcass traits

108 RM Reserve 2708

Birthdate: 06/08/22
Tattoo: 2708
Reg: 20663686

B/R New Day 454
V A R Reserve 1111
Sandpoint Blackbird 8809

RM Reserve 9804

Connealy Final Solution
Blevins Erica 3204
Blevins 112 Erica 1510
Cole Creek Black Cedar 46P

Cole Creek Black Cedar 1100
Cole Creek Juanada Bird 38N

Cole Creek Nellie 494

B A R Ext Traveler 205
M A R Nellie 1044
Mar Nellie 6410

Marb	.44
RE	.38
RADG	.23
DMI	1.00
\$EN	-22
HP	16.4
\$M	57
\$B	105
\$C	193

CED	BW	Birth	Wean	Yrlg	CEM	Milk	WR	YR
4	96	2.4	55	101	11	28	110	100

Look at this over and ...almost under performance EPD bull. Well don't discount him too much, along with his top performance he has a high HP

109 Rm Scottsman 2563

Birthdate: 06/03/22
Tattoo: 2563
Reg: 20663589

Ashley Euler
Dunlouise Cortachy Boy D137
Champagne Cherry Bee B117

RM Scottsman 9625

REM Ruby 1341

RM Sequel 8535

Rem Ruby 1331
Connealy Consensus
Connealy Combination 0188

REM Lady 8344

REM Lady 6318

Black Cayra of Conanga 8127
REM Natural 1812
REM Lady 0320

Marb	.69
RE	.24
RADG	.13
DMI	.20
\$EN	22
HP	12.4
\$M	68
\$B	107
\$C	207

CED	BW	Birth	Wean	Yrlg	CEM	Milk	WR	YR
2	84	-.5	44	68	7	16	92	90

American Outcross- This Scottsman will be a favorite on sale day. High \$EN, top DMI and IMF

112 RM Motive 9503 2678

Birthdate: 06/29/22
Tattoo: 2678
Reg: 20663676

HF Kodiak 5R
Soo Line Motive 9016
TLA Beauty 5R

RM Motive 9503

REM Erica 9368

RM I Trend 7528

FV Erica P517
REM's Answer 2701
RM 'S Answer 4528

REM Miss Line Drive 7413

REM Exts Miss Line Drive 431

REM Falcon 0305
JVC Pioneer X080
REM Exts Miss Line Drive 835

Marb	.35
RE	.48
RADG	.21
DMI	.08
\$EN	7
HP	13.3
\$M	80
\$B	108
\$C	220

CED	BW	Birth	Wean	Yrlg	CEM	Milk	WR	YR
9	80	-1.6	43	80	2	35	90	106

A good indexing, calving ease bull by one of our smallest cows.

110 RM Dunlop 2595

Birthdate: 06/08/22
Tattoo: 2595
Reg: 20663614

Ashley Euler
Dunlouise Cortachy Boy D137
Champagne Cherry Bee B117

RM Dunlop 9609

REM Barbaramere Jet 4346

RM Maverick 530 9912

RM Baron 5811

REM Barbaramere Jet 0375
Connealy Combination 0188

REM Essa 9424

REM Essa 6323

G G Queen 9361
REM Natural 1812
REM Essa 1323

Marb	.31
RE	.70
RADG	.13
DMI	.01
\$EN	17
HP	12.4
\$M	67
\$B	75
\$C	164

CED	BW	Birth	Wean	Yrlg	CEM	Milk	WR	YR
4	86	1.8	40	64	7	24	96	97

American Outcross- There will be a lot of marks on this bull, maybe for HP, \$EN, DMI, RE or his 1.44 RMY. I have him marked because of his great RM Baron dam

113 RM Combination 8806 2209

Birthdate: 06/20/22
Tattoo: 2209
Reg: 20663555

Connealy Consensus
Connealy Combination 0188
Black Cayra of Conanga 8127

RM Combination 8806

Blevins Blackcap Beauty 2438

Blevins Band Design 9817

Blevins Blackcap Beauty 2115
RM I Trend 7528

REM Normanday 2907

21AR Blackbird Lady 8037

RMXY Blackbird 8222

REM Blackbird 0306

G G Maverick 530
G G Blackbird 9326

Marb	.92
RE	.62
RADG	.16
DMI	.75
\$EN	10
HP	14.7
\$M	86
\$B	135
\$C	261

CED	BW	Birth	Wean	Yrlg	CEM	Milk	WR	YR
2	103	2.4	53	89	6	28	94	95

This good big, long bull has great over and under performance EPDS, along with high HP, \$EN, high IMF and RE. He comes from an old cow family that we have kept every heifer from.

111 RM Scottsman 2565

Birthdate: 06/03/22
Tattoo: 2565
Reg: 20663590

Ashley Euler
Dunlouise Cortachy Boy D137
Champagne Cherry Bee B117

RM Scottsman 9625

REM Ruby 1341

RM Sequel 8535

REM Natural 1812

Rem Ruby 1331
RM I Trend 7528

REM Blackbird 3380

REM Blackbird 6331

Blevins Queen Solution 9629
Rem Big West 2336
Rem Blackbird 3305

Marb	.43
RE	.18
RADG	.19
DMI	-.15
\$EN	8
HP	8.5
\$M	61
\$B	91
\$C	179

CED	BW	Birth	Wean	Yrlg	CEM	Milk	WR	YR
6	83	.3	46	75	10	24	98	94

American Outcross- Don't miss this Scottsman by our great Natural daughter, 3380, who goes back to our great 9361 cow. There is REAL marbling, good disposition and feed efficiency (DMI) in this bull



G G Queen 9361



116 RM Motive 7541 2648

Birthdate: 06/20/22
Tattoo: 2648
Reg: 20663653

Marb	.62
RE	.48
RADG	.15
DMI	.19
\$EN	16
HP	10.7
\$M	71
\$B	112
\$C	216

Soo Line Motive 9016
HF Kodiak 5R
TLA Beauty 5R
RM Motive 7541
Rem Big West 2336
REM Blackbird 5320
Rem Blackbird 3305
Connealy Combination 0188
RM Combination 7501
REM Lass 5319
REM Everelda Entense 9374
REM Normandy 2907
REM Everelda Entense 7305
REM Everelda Entense 1364

CED	BW	Birth	Wean	Yrlg	CEM	Milk	WR	YR
10	76	-.8	39	64	10	22	101	98

Don't miss this calving ease bull; High \$EN, top 5% DMI, side by side carcass EPDS and a 1.47 RMY. He's anything but just a heifer bull!

114 RM Motive 9503 2666

Birthdate: 06/25/22
Tattoo: 2666
Reg: 20663667

Marb	.54
RE	.65
RADG	.20
DMI	-.07
\$EN	8
HP	15.9
\$M	75
\$B	126
\$C	238

Soo Line Motive 9016
HF Kodiak 5R
TLA Beauty 5R
RM Motive 9503
RM I Trend 7528
REM Erica 9368
FV Erica P517
Connealy Consensus
Connealy Combination 0188
Black Cayra of Conanga 8127
REM Pride 7310
REM Natural 1812
MJB Pride 3723
Ox Bow Pride 0124

CED	BW	Birth	Wean	Yrlg	CEM	Milk	WR	YR
7	80	-1.1	43	77	6	37	98	96

A calving ease Motive with a high HP, DMI, and side by side carcass traits

117 RM Motive 9503 2611

Birthdate: 06/09/22
Tattoo: 2611
Reg: 20663628

Marb	.26
RE	.21
RADG	.22
DMI	.45
\$EN	4
HP	14.2
\$M	64
\$B	95
\$C	187

Soo Line Motive 9016
HF Kodiak 5R
TLA Beauty 5R
RM Motive 9503
RM I Trend 7528
REM Erica 9368
FV Erica P517
S A V Final Answer 0035
S A V Mustang 9134
S A V Emblynette 7415
REM Queen Bea Structure 5324
REM Natural 1812
REM Queen Bea Structure 3338
G C Queen Bea Structure 58

CED	BW	Birth	Wean	Yrlg	CEM	Milk	WR	YR
12	81	-.2	44	83	8	31	97	102

Several have commented on how good this bull is already. Add to that, his calving ease, positive maternal traits, top DMI and a 1.29 RMY and I think you'll like him.

115 RM Reserve 2807

Birthdate: 06/07/22
Tattoo: 2807
Reg: 20663693

Marb	.44
RE	.56
RADG	.14
DMI	-.03
\$EN	11
HP	14.4
\$M	80
\$B	103
\$C	214

V A R Reserve 1111
B/R New Day 454
Sandpoint Blackbird 8809
RM Reserve 9804
Connealy Final Solution
Blevins Erica 3204
Blevins 112 Erica 1510
G A R Retail Product
RM Sequel 8535
G G Queen 9361
REM Forever 1374
BR Midland
FV Forever S284
FV Forever 3028

CED	BW	Birth	Wean	Yrlg	CEM	Milk	WR	YR
5	83	1.9	42	64	5	25	93	98

This bull's dam always puts up a popular bull on sale day. This bull is a real cow maker and he has side by side carcass traits

118 RM Scottsman 2915

Birthdate: 06/06/22
Tattoo: 2915
Reg: 20663708

Marb	.36
RE	.31
RADG	.11
DMI	.20
\$EN	12
HP	11.6
\$M	61
\$B	81
\$C	166

Ashley Euler
Dunlouse Cortachy Boy D137
Champagne Cherry Bee B117
RM Scottsman 9625
RM Sequel 8535
REM Ruby 1341
Rem Ruby 1331
G G Maverick 530
RM Maverick 530 9912
FV Barbaramere Jet T023
RMV Queen Peggy 4055
Bon View New Design 208
FV Queen Peggy P090
Baldridge Queen Peggy L802

CED	BW	Birth	Wean	Yrlg	CEM	Milk	WR	YR
4	77	-.4	33	54	8	25	96	97

American Outcross- Another good calving ease Scottsman bull by a good 10 year old Maverick bred cow. He has all the right longevity numbers

119 RM Scottsman 2570

Birthdate: 06/05/22
Tattoo: 2570
Reg: 20663594

Marb	.64
RE	.32
RADG	.20
DMI	.17
\$EN	19
HP	13.2
\$M	73
\$B	97
\$C	199

Ashley Euler
Dunlouise Cortachy Boy D137
Champagne Cherry Bee B117

RM Scottsman 9625

REM Ruby 1341

RM Sequel 8535

Rem Ruby 1331
B/R New Day 454

V A R Reserve 1111

REM Blackbird 9359

REM Blackbird 3344

Sandpoint Blackbird 8809

JVC Pioneer X080

REM Blackbird 1336

CED	BW	Birth	Wean	Yrlg	CEM	Milk	WR	YR
-2	94	3.2	42	71	4	19	97	91

American Outcross- This Scottsman has several donor cows in his pedigree, which means there is a lot of longevity behind him. His high HP, \$EN, IMF and top DMI verify it.

121 RM Combination 7519 2521

Birthdate: 05/10/22
Tattoo: 2521
Reg: 20663557

Marb	.66
RE	.49
RADG	.20
DMI	-.22
\$EN	12
HP	13.7
\$M	74
\$B	115
\$C	223

Connealy Consensus
Connealy Combination 0188
Black Cayra of Conanga 8127

RM Combination 7519

REM Miss Baranda 4387

REM's Answer 2701

FV Miss Baranda R218

Connealy Consensus
Connealy Combination 0188
Black Cayra of Conanga 8127

REM Betty 7318

REM Betty 2306

S A V Mustang 9134

REM Betty 0327

CED	BW	Birth	Wean	Yrlg	CEM	Milk	WR	YR
-2	86	0	47	78	-1	23	99	97

I believe the Angus Association is being a little dramatic with this bull's CED. The rest of his numbers look like a classic Reminisce "XM" bull.

120 RM Cortachy Boy 9641 2643

Birthdate: 06/16/22
Tattoo: 2643
Reg: 20663651

Marb	1.06
RE	.24
RADG	.11
DMI	-.06
\$EN	22
HP	10.4
\$M	59
\$B	104
\$C	194

Ashley Euler
Dunlouise Cortachy Boy D137
Champagne Cherry Bee B117

RM Cortachy Boy 9641

REM Winny 1338

RM Sequel 8535

RM Winny 8302
RM I Trend 7528

REM Natural 1812

REM Cassie 8304

REM Cassie 6375

Blevins Queen Solution 9629

Connealy Combination 0188

REM Cassie 4317

CED	BW	Birth	Wean	Yrlg	CEM	Milk	WR	YR
0	90	1.8	39	56	11	14	88	98

American Outcross- This Cortachy Boy is the second highest IMF bull in the sale. He has a high \$EN, top 1% for feed efficiency (DMI) and posts a 1.47 RMY. That's a lot in one bull

122 RM Cortachy Boy 9641 2640

Birthdate: 06/15/22
Tattoo: 2640
Reg: 20663649

Marb	.45
RE	.09
RADG	.13
DMI	-.65
\$EN	18
HP	11.5
\$M	66
\$B	86
\$C	178

Ashley Euler
Dunlouise Cortachy Boy D137
Champagne Cherry Bee B117

RM Cortachy Boy 9641

REM Winny 1338

RM Sequel 8535

RM Winny 8302
FV Precision T273

REM Precision 1547

REM Blackbird 6357

REM Eulima Precise 4310

REM Eulima Precise 8361

G A R Yield Grade

Blevins Eulima Precise 3426

CED	BW	Birth	Wean	Yrlg	CEM	Milk	WR	YR
-1	83	2.1	38	56	7	20	97	88

Making great American EPDS is tough to do with a 10 year old cow bred to Cortachy Boy, especially when we don't AI to bulls over 100 YW EPD. This bull has top maternal and longevity EPDS and he posts a 1.42 RMY



RM Scottsman 9625 - Daughter

123 RM Reserve 2706

Birthdate: 06/05/22
Tattoo: 2706
Reg: 20663684

Marb	.51
RE	.58
RADG	.14
DMI	.46
\$EN	14
HP	15.3
\$M	73
\$B	93
\$C	194

B/R New Day 454
V A R Reserve 1111
Sandpoint Blackbird 8809

RM Reserve 9804

Blevins Erica 3204

Connealy Final Solution

Blevins 112 Erica 1510

FV Precision T273

FV Precision P076

FV P512 of Ideal 4465

MJB Miss Shoshone 2734

FV Miss Shoshone R401

Bon View New Design 1407

Fairview Miss Shoshone 3423

CED	BW	Birth	Wean	Yrlg	CEM	Milk	WR	YR
10	80	-1.0	32	59	3	30	90	94

This Reserve posts some pretty nice numbers for, again being out of a 12 year old cow. Besides his great longevity EPDS (HP, \$EN, DMI) he posts side by side carcass EPDS.

124 RM Scottsman 2589

Birthdate: 06/07/22
Tattoo: 2589
Reg: 20663609

Ashley Euler
Dunlouise Cortachy Boy D137
Champagne Cherry Bee B117

RM Scottsman 9625

REM Ruby 1341

RM I Trend 7528

REM Lass 0379

REM Lass 6302

RM Sequel 8535

Rem Ruby 1331
Isu Imaging Q 9111

REM Ella 5329

Mytty In Focus

REM Lass 4346

Marb	.64
RE	.34
RADG	.15
DMI	.09
\$EN	20
HP	13.7
\$M	56
\$B	105
\$C	192

CED	BW	Birth	Wean	Yrlg	CEM	Milk	WR	YR
3	82	.7	40	65	1	13	91	91

American Outcross- A Scottsman by a 14 year old, bred back, RM Itrend cow! His numbers are as good as he is.

127 RM Baron 2660

Birthdate: 06/25/22
Tattoo: 2660
Reg: 20663662

Connealy Combination 0188
Black Cayra of Conanga 8127

RM Baron 5811

G G Queen 9361

RM 2 Trend 3105

REM Mariah 8460

REM Mariah 6451

Connealy Consensus
Black Cayra of Conanga 8127

Generic Bando 581

Mars Queenie 547
S A V Mustang 9134

REM Juice 1314

RM Maverick 530 9912

FV Mariah R134

Marb	.68
RE	.44
RADG	.16
DMI	-.07
\$EN	17
HP	12.5
\$M	75
\$B	93
\$C	196

CED	BW	Birth	Wean	Yrlg	CEM	Milk	WR	YR
10	80	-.3	43	70	14	25	88	86

Here is one of the few RM Baron's in the sale, by a great 2Trend cow. Calving ease, HP, \$EN, DMI, side by side carcass EPDs and a 1.45 RMY. There are a lot of RM Baron daughters talked about in this catalog.



REM Barbaramere 5305
Maternal Grand Dam - Lot 128

125 RM Motive 7541 2673

Birthdate: 06/28/22
Tattoo: 2673
Reg: 20663672

HF Kodiak 5R
Soo Line Motive 9016

RM Motive 7541

REM Blackbird 5320

RM I Trend 7528

REM Blackbird 6314

M J B Blackbird 3709

TLA Beauty 5R

Rem Big West 2336

Rem Blackbird 3305
Isu Imaging Q 9111

REM Ella 5329

Bon View New Design 878

Jolly R Blackbird 122F

Marb	.51
RE	.57
RADG	.27
DMI	-.25
\$EN	-4
HP	12.8
\$M	65
\$B	132
\$C	236

CED	BW	Birth	Wean	Yrlg	CEM	Milk	WR	YR
-3	94	4.5	53	92	4	25	99	103

A good indexing cow bull by Motive. He is also in the top 1% of the breed for DMI and posts side by side carcass EPDS.

126 RM Reserve 2582

Birthdate: 06/07/22
Tattoo: 2582
Reg: 20663603

B/R New Day 454
V A R Reserve 1111
Sandpoint Blackbird 8809

RM Reserve 9804

Blevins Erica 3204

RM I Trend 7528

REM Miss Baranda 1353

G G Maverick 530
REM Miss Baranda 8035

Connealy Final Solution

Blevins 112 Erica 1510
Isu Imaging Q 9111

REM Ella 5329

Fairview Miss Baranda 3290

Marb	.73
RE	.31
RADG	.18
DMI	.27
\$EN	-1
HP	17.6
\$M	70
\$B	126
\$C	233

CED	BW	Birth	Wean	Yrlg	CEM	Milk	WR	YR
2	88	2.4	50	79	8	20	94	92

Reserve X 13 year old I trend cow that has had many bulls in this sale in the top ten. Look close at his HP, DMI, carcass EPDS. He also posts a 1.27 RMY

128 RM Combination 8806 2821

Birthdate: 07/04/22
Tattoo: 2821
Reg: 20848401

Connealy Consensus
Connealy Combination 0188
Black Cayra of Conanga 8127

RM Combination 8806

Blevins Band Design 9817
Blevins Blackcap Beauty 2438
Blevins Blackcap Beauty 2115

Connealy Consensus
Connealy Combination 0188
Black Cayra of Conanga 8127

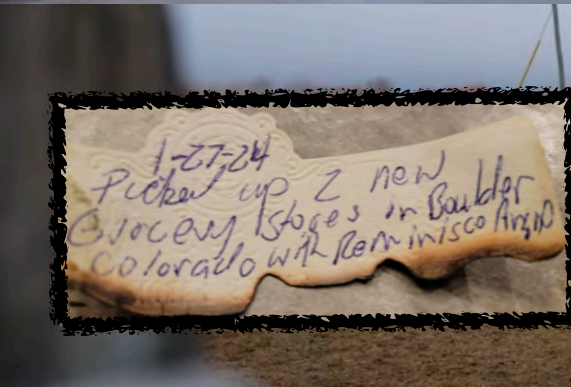
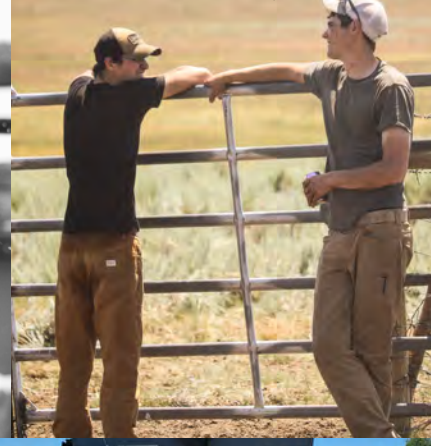
SMB Barbaramere 8855

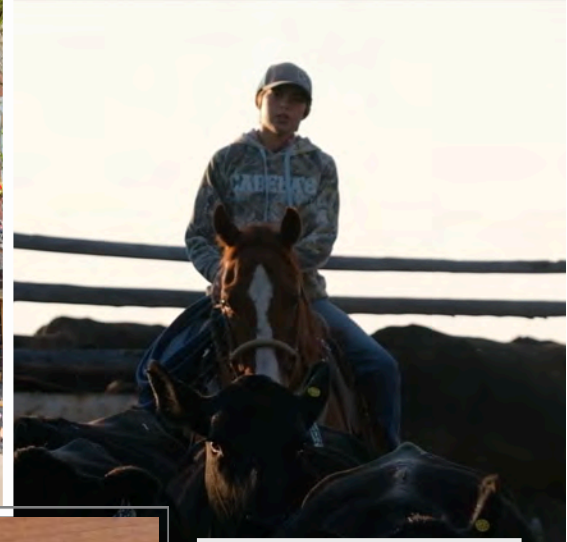
Rem Big West 2336
REM Barbaramere 5305
Rem Barbaramere Juice 2312

Marb	.26
RE	.54
RADG	.25
DMI	1.30
\$EN	-9
HP	12.2
\$M	71
\$B	112
\$C	216

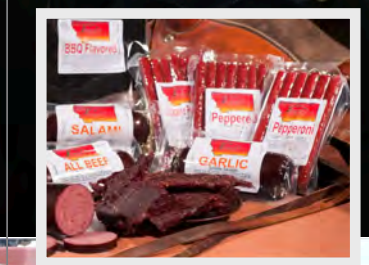
CED	BW	Birth	Wean	Yrlg	CEM	Milk	WR	YR
7	87	1.8	72	124	10	22	110	112

This bull's on the leader board for performance, cow family and IMF. He indexed 113 himself for IMF. I think the AAA may have been bass fishing in a trout stream when they configured his IMF EPD. His dam has averaged 113 for IMF on her progeny





4-27-23
AT ing 1070 Heife
For Chellis Crooney Bra
Livestock, X's cattle



129 RM Scottsman 2641

Birthdate: 06/15/22
Tattoo: 2641
Reg: 20663650

Ashley Euler
Dunlouse Cortachy Boy D137
Champagne Cherry Bee B117

RM Scottsman 9625

REM Ruby 1341

RM Sequel 8535

Rem Ruby 1331
B/R New Day 454

V A R Reserve 1111

Sandpoint Blackbird 8809

REM Esther 4sight 9331

REM 'S Answer 4528

REM Esther 4sight 7383
Blevins Esther 4sight 0442

Marb	.82
RE	.34
RADG	.16
DMI	-.89
\$EN	25
HP	11.0
\$M	59
\$B	102
\$C	191

CED	BW	Birth	Wean	Yrlg	CEM	Milk	WR	YR
4	82	-.3	28	40	1	16	91	89

American Outcross- Another Scottsman X Reserve. You won't believe they are straight Angus when you see them. This bull is everything Traveler 6807 was with the addition of marbling proven longevity

132 RM Cortachy Boy 9641 2546

Birthdate: 06/10/22
Tattoo: 2546
Reg: 20663575

Ashley Euler
Dunlouse Cortachy Boy D137
Champagne Cherry Bee B117

RM Cortachy Boy 9641

REM Winny 1338

RM Sequel 8535

RM Winny 8302
Boyd New Day 8005

B/R New Day 454

B/R Ruby 1224

JVC Ruby of Tiffany A346

G A R Predestined

T B A Ruby of Tiffany 9011
T B A Ruby of Tiffany 523

Marb	.78
RE	.51
RADG	.15
DMI	.28
\$EN	20
HP	7.9
\$M	57
\$B	104
\$C	192

CED	BW	Birth	Wean	Yrlg	CEM	Milk	WR	YR
6	78	1.5	43	69	7	18	97	100

American Outcross- This 10 year old cow has pumped out some real chart toppers in her time. His sire is an exceptional Cortachy Boy by our great donor cow RM 1338, by RM Sequel. He is a top \$EN, DMI bull with side by side carcass traits and a 1.29 RMY

130 RM Reserve 2600

Birthdate: 06/08/22
Tattoo: 2600
Reg: 20663619

B/R New Day 454
V A R Reserve 1111

Sandpoint Blackbird 8809

RM Reserve 9804

Blevins Erica 3204

Connealy Final Solution

Blevins 1i2 Erica 1510
S A V Net Worth 4200

Shipwheel Net Worth 0601
DR J Miss Lead On-K109

REM Heather Bloom 3375

Vermilion Payweight J847
Diamond Heather Bloom R190
Basin Heather Bloom 9721

Marb	1.04
RE	.41
RADG	.25
DMI	.41
\$EN	-4
HP	16.3
\$M	75
\$B	151
\$C	271

CED	BW	Birth	Wean	Yrlg	CEM	Milk	WR	YR
1	85	2.8	50	90	8	32	90	95

Here is the third highest marbling bull in the sale. Beef by this bull won't end up in the commodity market. It will be served in the finest restaurants in the west! And you will get a lot of nice moderate heifers to keep from the cow side. His dam is 11 this year.

133 RM Baron 2685

Birthdate: 07/01/22
Tattoo: 2685
Reg: 20848399

Connealy Consensus
Connealy Combination 0188
Black Cayra of Conanga 8127

RM Baron 5811

G G Queen 9361

Generic Bando 581

Mars Queenie 547
Connealy Combination 0188

RM Baron 5811

G G Queen 9361

REM Bararamere 7394

REM Natural 1812

REM Bararamere 4330
REM Bararamere 2320

Marb	.53
RE	.53
RADG	.18
DMI	.89
\$EN	6
HP	11.4
\$M	95
\$B	123
\$C	255

CED	BW	Birth	Wean	Yrlg	CEM	Milk	WR	YR
5	83	2.2	64	101	4	32	80	91

Here is a classic Baron bull. Look at the rapid early growth that shuts down as a yearling. Add this to his \$EN and side by side carcass traits and you have a moderate powerhouse

131 RM Reserve 2567

Birthdate: 06/05/22
Tattoo: 2567
Reg: 20663591

B/R New Day 454
V A R Reserve 1111

Sandpoint Blackbird 8809

RM Reserve 9804

Blevins Erica 3204

Connealy Final Solution

Blevins 1i2 Erica 1510
Ashley Euler

Dunlouse Cortachy Boy D137
Champagne Cherry Bee B117

REM Bararamere 9385

G G Maverick 530

REM Bararamere 5346
REM Bararamere 7314

Marb	.56
RE	.42
RADG	.18
DMI	.02
\$EN	17
HP	15.8
\$M	74
\$B	93
\$C	195

CED	BW	Birth	Wean	Yrlg	CEM	Milk	WR	YR
8	70	1.4	50	76	11	16	98	102

Another Reserve X Cortachy Boy cross. My hat's off to these Cortachy Boy daughters, they are broody, snappy, tough and look at the traits they can produce; right in line with the breed standards and better in most categories



**RM McClendon 9599
Daughter**

RM McClendon 9599
15 year old Grand Dam



136 RM Dunlop 2820
Birthdate: 07/02/22
Tattoo: 2820
Reg: 20848400

Ashley Euler
Dunlouse Cortachy Boy D137
Champagne Cherry Bee B117

RM Dunlop 9609

RM Maverick 530 9912
REM Barbaramere Jet 4346
REM Barbaramere Jet 0375
Cole Creek Black Cedar 46P
Cole Creek Black Seal 230
Cole Creek Juanada G 53T

Cole Creek Shomere 264

Cole Creek Goldmere 31N
Cole Creek Shomere 116W
Cole Creek 806 Shonita 1P

Marb	.32
RE	.35
RADG	.13
DMI	0
\$EN	22
HP	10.7
\$M	64
\$B	76
\$C	163

CED	BW	Birth	Wean	Yrlg	CEM	Milk	WR	YR
6	84	.4	34	53	4	24	100	100

This Dunlop is by one of our favorite cows at Reminisce. She doesn't have much for EPDS, but she always produces volume and performance

134 RM Combination 7813 2665
Birthdate: 06/25/22
Tattoo: 2665
Reg: 20663666

Connealy Consensus
Connealy Combination 0188
Black Cayra of Conanga 8127
S A V Mustang 9134

RM Combination 7813

REM Bell Sara 3306
FV Bell Sara T278
MCC Daybreak

G A R Anticipation
G A R 5050 New Design 0530

REM Barbaramere 0339

REM Barbaramere 1342
RM Sequel 8535
REM Barbaramere 5305

Marb	.51
RE	.50
RADG	.26
DMI	.10
\$EN	8
HP	15.5
\$M	87
\$B	122
\$C	245

CED	BW	Birth	Wean	Yrlg	CEM	Milk	WR	YR
10	75	-1.6	46	86	13	28	92	90

Here's the Reminisce "XM" kind. His 7year old sire will get used again this year. This calving ease bull has a high HP, feed efficiency and look at his side by side carcass EPDS

137 RM Dunlop 2618
Birthdate: 06/10/22
Tattoo: 2618
Reg: 20663634

Ashley Euler
Dunlouse Cortachy Boy D137
Champagne Cherry Bee B117

RM Dunlop 9609

RM Maverick 530 9912
REM Barbaramere Jet 4346
REM Barbaramere Jet 0375
Cole Creek Black Cedar 46P
Cole Creek Black Seal 230
Cole Creek Juanada G 53T

REM Barbaramere Jet 9422

REM Barbaramere Jet 0375
FV Barbaramere Jet T023

Marb	.31
RE	.27
RADG	.15
DMI	-.21
\$EN	26
HP	11.6
\$M	55
\$B	57
\$C	129

CED	BW	Birth	Wean	Yrlg	CEM	Milk	WR	YR
8	88	.6	22	42	8	13	98	94

American Outcross- Here is a big rib eyed Dunlop by a big high volume Black Seal daughter. He post our classic breed leading maternal traits and posts a 1.35 RMY

135 RM Scottsman 2689
Birthdate: 06/05/22
Tattoo: 2689
Reg: 20715655

Ashley Euler
Dunlouse Cortachy Boy D137
Champagne Cherry Bee B117

RM Scottsman 9625

REM Ruby 1341
RM Ruby 1331
REM's Answer 2701

RM 'S Answer 4528
REM Falcon 0305

REM Erica Eileen 8416

Cole Creek Black Seal 230
REM Erica Eileen 5399
DA Erica Eileen 0535 238

Marb	.75
RE	.04
RADG	.15
DMI	-.44
\$EN	23
HP	16.4
\$M	74
\$B	113
\$C	221

CED	BW	Birth	Wean	Yrlg	CEM	Milk	WR	YR
-4	72	1.3	42	63	2	18	116	103

Here is a double bred calving ease bull. I know his numbers don't reflect that, but we would use him on our own heifers. High HP, EN and marbling bull

138 RM Dunlop 2601
Birthdate: 06/08/22
Tattoo: 2601
Reg: 20663620

Ashley Euler
Dunlouse Cortachy Boy D137
Champagne Cherry Bee B117

RM Dunlop 9609

RM Maverick 530 9912
REM Barbaramere Jet 4346
REM Barbaramere Jet 0375
Connealy Consensus
Connealy Combination 0188
Black Cayra of Conanga 8127

REM Blackcap Beauty 6416

Connealy Answer 71
Blevins Blackcap Beauty 3213
Blevins Blackcap Beauty 2115

Marb	.64
RE	.54
RADG	.20
DMI	.50
\$EN	7
HP	10.4
\$M	72
\$B	118
\$C	225

CED	BW	Birth	Wean	Yrlg	CEM	Milk	WR	YR
7	87	0	50	86	9	25	99	101

American Outcross- If you look up the Dunlops in this sale you will notice a pattern of them being over 50 for WW EPD and under 100 for YW EPD. That's what we call over and under and we are leading the industry "Back to the Future" with this new performance curve. They are also consistent for side by side carcass EPDS and top DMI EPDS.

139 RM Reserve 2804

Birthdate: 05/28/22
Tattoo: 2804
Reg: 20663691

Marb	.61
RE	.76
RADG	.16
DMI	.77
\$EN	4
HP	11.4
\$M	64
\$B	119
\$C	218

V A R Reserve 1111

B/R New Day 454

Sandpoint Blackbird 8809

RM Reserve 9804

Blevins Erica 3204

Connealy Final Solution

Blevins 112 Erica 1510

Ashley Euler

Dunlouise Cortachy Boy D137
Champagne Cherry Bee B117

SMB Erica Traveler 9857

Cole Creek Black Seal 230
SMB Erica Traveler 5866
Blevins Erica Traveler 7217

CED	BW	Birth	Wean	Yrlg	CEM	Milk	WR	YR
8	79	-.9	47	79	11	27	95	99

The Reserve X Cortachy Boy cross produces very consistent results; good moderate, thick cattle like this calving ease bull, with side by side carcass EPDS and like a lot of bulls in this sale he ranks in the top 1% of the breed for feed efficiency

141 RM Cortachy Boy 2213

Birthdate: 07/04/22
Tattoo: 2213
Reg: 20848397

Marb	.79
RE	-.03
RADG	.11
DMI	.20
\$EN	17
HP	11.5
\$M	76
\$B	84
\$C	185

Ashley Euler
Dunlouise Cortachy Boy D137
Champagne Cherry Bee B117

RM Cortachy Boy 9641

REM Winny 1338

RM Sequel 8535

RM Winny 8302

Connealy Consensus

Connealy Combination 0188
Black Cayra of Conanga 8127

RMXY Ella 7220

REM Ella 5329

G A R Retail Product

Rem Ella 1341

CED	BW	Birth	Wean	Yrlg	CEM	Milk	WR	YR
4	84	.9	40	60	8	30	95	87

Here is a high marbling Cortachy Boy. Despite his low ribeye EPD, he posts a 1.40 RMY. That is why we collect the raw data on these bulls. It is vital to making genetic improvements to your cowherd, This bull's dam is moderate, sweet and has a perfect udder and feet.

140 RM Motive 9503 2661

Birthdate: 06/25/22
Tattoo: 2661
Reg: 20663663

Marb	.48
RE	.35
RADG	.27
DMI	-.04
\$EN	-3
HP	13.6
\$M	52
\$B	141
\$C	235

Soo Line Motive 9016

HF Kodiak 5R

TLA Beauty 5R

RM Motive 9503

REM Erica 9368

RM I Trend 7528

FV Erica P517

HF Kodiak 5R

Soo Line Motive 9016

TLA Beauty 5R

Rem Blackbird 7343

Bon View New Design 878
M J B Blackbird 3709
Jolly R Blackbird 122F

CED	BW	Birth	Wean	Yrlg	CEM	Milk	WR	YR
6	103	1.4	47	92	-2	22	98	98

Classic Reminisce EPD package in this Motive.

142 RM Motive 9503 2667

Birthdate: 06/26/22
Tattoo: 2667
Reg: 20663668

Marb	.74
RE	.42
RADG	.17
DMI	.28
\$EN	7
HP	13.3
\$M	62
\$B	117
\$C	214

Soo Line Motive 9016

HF Kodiak 5R

TLA Beauty 5R

RM Motive 9503

REM Erica 9368

RM I Trend 7528

FV Erica P517

RM I Trend 7528

REM Natural 1812

Blevins Queen Solution 9629

REM Blackbird 6425

Blevins Ext Solution 4729
Blevins Blackbird 9698
Blevins Blackbird 5487

CED	BW	Birth	Wean	Yrlg	CEM	Milk	WR	YR
-1	94	3.1	52	82	-2	18	109	95

Looking for another Reminisce bull with over and under performance traits. Mark him down. You are also buying good feed efficiency and IMF with this bull



143 RM Motive 7541 2662

Birthdate: 06/25/22
Tattoo: 2662
Reg: 20663664

Marb	.21
RE	.08
RADG	.15
DMI	-.65
\$EN	17
HP	9.2
\$M	68
\$B	82
\$C	174

Soo Line Motive 9016

HF Kodiak 5R

TLA Beauty 5R

RM Motive 7541

REM Blackbird 5320

Rem Big West 2336

Rem Blackbird 3305

Connealy Consensus

Connealy Combination 0188
Black Cayra of Conanga 8127

REM Queenie 7357

S A V Mustang 9134
REM Queenie 5339
REM Queenie 9308

CED	BW	Birth	Wean	Yrlg	CEM	Milk	WR	YR
9	79	-1.6	37	58	8	30	94	90

The last two brothers to this good calving ease Motive, both went to the Cross 4 Ranch in Miles City. His moderate thick, easy fleshing dam just makes them that way.

144 RM Cortachy Boy 9508 2696

Birthdate: 05/25/22
Tattoo: 2696
Reg: 20663680

Marb	.33
RE	.51
RADG	.18
DMI	-.47
\$EN	18
HP	9.2
\$M	61
\$B	85
\$C	171

Ashley Eular
Dunlouise Cortachy Boy D137
Champagne Cherry Bee B117

RM Cortachy Boy 9508

REM Lass 1358

RM Sequel 8535

A J R Lass 7224
B/R New Day 454

V A R Reserve 1111

Sandpoint Blackbird 8809

REM Primrose 0373

REM Primrose 1306

RM Sequel 8535

REM Primrose 8353

CED	BW	Birth	Wean	Yrlg	CEM	Milk	WR	YR
3	70	1.2	37	58	2	26	98	96

American Outcross- This calving ease Cortachy Boy bred bull is a breed leader for \$EN, DMI and posts a 1.44 RMY

146 RM Dunlop 2615

Birthdate: 06/09/22
Tattoo: 2615
Reg: 20663632

Marb	.79
RE	.31
RADG	.13
DMI	.31
\$EN	16
HP	13.4
\$M	85
\$B	88
\$C	199

Ashley Eular
Dunlouise Cortachy Boy D137
Champagne Cherry Bee B117

RM Dunlop 9609

REM Barbaramere Jet 4346

RM Maverick 530 9912

REM Barbaramere Jet 0375
Connealy Combination 0188

RM Baron 5811

G G Queen 9361

REM Erica 9348

REM Erica 9368

RM I Trend 7528

FV Erica P517

CED	BW	Birth	Wean	Yrlg	CEM	Milk	WR	YR
3	85	1.3	51	77	5	24	115	90

This bull is a traveler. WE saw him in ever corner of the pasture and on top of the highest points. He posts great \$EN, over and under performance traits and a 1.55 RMY

145 RM McLendon 2545

Birthdate: 05/25/22
Tattoo: 2545
Reg: 20663574

Marb	.76
RE	.18
RADG	.12
DMI	-.62
\$EN	20
HP	12.1
\$M	51
\$B	105
\$C	187

Ashley Eular
Dunlouise Cortachy Boy D137
Champagne Cherry Bee B117

RM McLendon 9599

REM Everelda Entense 5361

RM 2 Trend 3105

REM Everelda Entense 8351

REM's Answer 2701

RM 'S Answer 4528

REM Falcon 0305

REM Miss Line Drive 0407

REM Exts Miss Line Drive 132

RM Sequel 8535

REM Exts Miss Line Drive 835

CED	BW	Birth	Wean	Yrlg	CEM	Milk	WR	YR
6	78	.9	28	43	4	23	100	96

American Outcross- That crosses all the right boxes and he is a double bred calving ease bull

147 RM Reserve 9811 2668

Birthdate: 06/27/22
Tattoo: 2668
Reg: 20663669

Marb	.63
RE	.42
RADG	.18
DMI	-.82
\$EN	12
HP	15.7
\$M	64
\$B	97
\$C	190

B/R New Day 454

V A R Reserve 1111

Sandpoint Blackbird 8809

RM Reserve 9811

Blevins Blackcap 3240

Blevins Ext Solution 4729

Blevins Blackcap 0417

C R A Bextor 872 5205 608

G G Maverick 530

G G Della 3320

REM Everelda Entense 8351

FV Everelda Entense P373

B/R New Dimension 7127

Sitz Everelda Entense 2636

CED	BW	Birth	Wean	Yrlg	CEM	Milk	WR	YR
3	79	1.3	31	53	11	33	89	91

This good Reserve bred bull is by the 16 year old granddam of McClendon. Her perfect udder and feet are the reasons we use him so heavy, along with his maternal brother RM FJB. The last 2 brothers make their home at Cayuse Livestock. His numbers look the same



Reminisce Angus Sires

Semen Available

Semen \$20 / Certificate \$40

RM Scottsman 9625

AAA 19793944

CED	BW	WW	YW	RADG	DMI	HP	CEM	Milk	\$EN	Marb	RE	\$M	\$W	\$F	\$G	\$B	\$C
-3	+1.5	+37	+59	+1.14	+1.10	+13.6	+2	+16	+23	+82	+33	+67	+36	+44	+58	+102	+199

RM McClendon 9599

AAA 19793942

CED	BW	WW	YW	RADG	DMI	HP	CEM	Milk	\$EN	Marb	RE	\$M	\$W	\$F	\$G	\$B	\$C
+11	-1.9	+25	+37	+1.10	-.94	+12.4	+9	+14	+26	+46	+27	+28	+32	+35	+68	+168	+141

RM Dunlop 9609

AAA 19793855

CED	BW	WW	YW	RADG	DMI	HP	CEM	Milk	\$EN	Marb	RE	\$M	\$W	\$F	\$G	\$B	\$C
+5	+1.2	+37	+54	+1.11	-.27	+12.2	+10	+14	+27	+67	+76	+67	+38	+38	+57	+95	+190

RM Reserve 9804

AAA 19793910

CED	BW	WW	YW	RADG	DMI	HP	CEM	Milk	\$EN	Marb	RE	\$M	\$W	\$F	\$G	\$B	\$C
+13	+0	+49	+88	+2.24	+4.43	+18.3	+10	+25	-3	+65	+77	+78	+49	+72	+56	+128	+244

RM Big Easy 0585 FJB

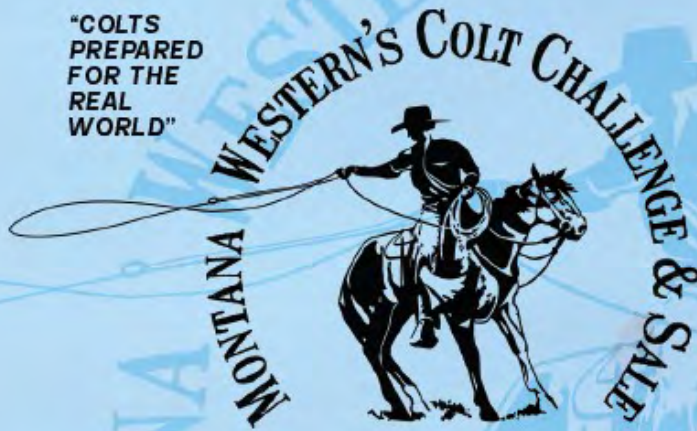
AAA 20147206

CED	BW	WW	YW	RADG	DMI	HP	CEM	Milk	\$EN	Marb	RE	\$M	\$W	\$F	\$G	\$B	\$C
+10	+4	+48	+89	+2.22	+4.47	+16.0	+12	+26	+2	+91	+36	+78	+50	+60	+60	+120	+234



Conneally Reflection
 Connealy Impression
 Pearl Pammy of Conanga 194
Byergo Big Easy 2601
 Byergo Sitting Bull 3500
 Byergo Miss Elia 6153
 Byergo Miss Elia 3414
 S A V Mustang 9134
 RM 2 Trend 3105
 REM Juice 1314
REM Everelda Entense 5361
 G G Maverick 530
 REM Everelda Entense 8351
 FV Everelda Entense P373

"COLTS
PREPARED
FOR THE
REAL
WORLD"



MONTANA CENTER FOR HORSEMANSHIP
DILLON, MONTANA

MAR 29-30,
2024

FRIDAY

COLT CHALLENGE: 9 AM

SATURDAY

PREVIEW: 10 AM

LUNCH: 11:30 AM

PROVIDED BY BEAVERHEAD MOTORS

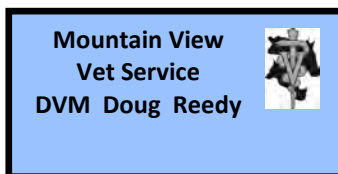
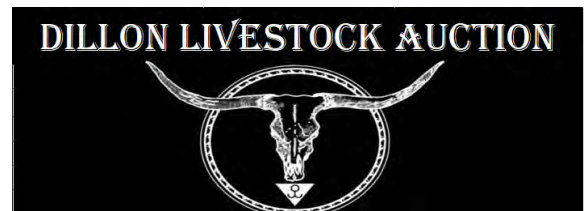
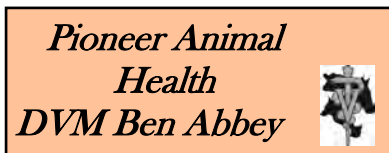
SALE: 1 PM

FOR MORE INFORMATION, CONTACT ERIC HOFFMANN
BY CALLING (406) 925-1499

PREVIEW THE COLTS:  @COLTCHALLENGEANDSALE



Lunch Sponsors





Bryan & Marcia Mussard

5101 Sweetwater Rd., Dillon, MT 59725

406-925-1416 • 406-686-6363

bwm6101@outlook.com • www.remangus.com

PRESORTED
FIRST CLASS
US Postage
Paid
Ballyhoo Printing
59457

FIRST CLASS



Annual Production Sale
MARCH 1, 2024

1:00 PM, Big West Management Feeding Facility, Dillon, Montana

*Real
American Outcross
Bloodlines*